

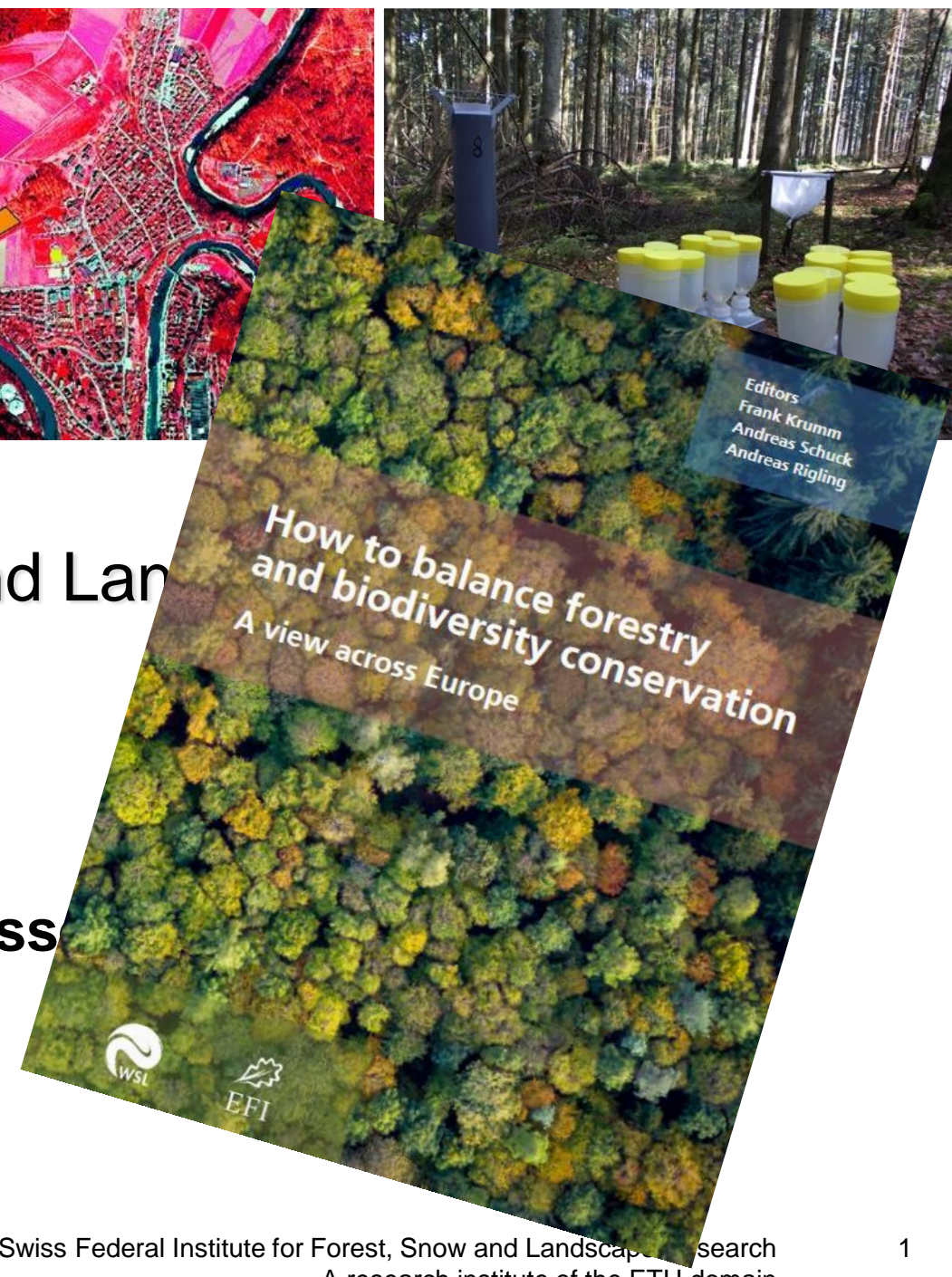


Swiss Federal Institute for Forest, Snow and Landscape Research

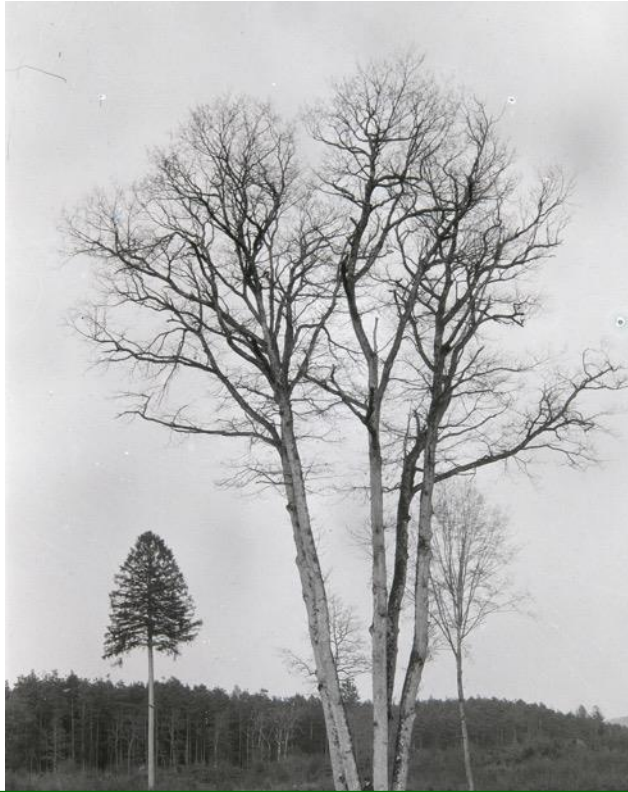
Welcome

Prof. Dr. Beate Jessen

Director



European forests have been managed since a very long time ...



Requirement of rethinking traditional concepts in a holistic way
Task of research to provide the scientific basis for improvements
to support practitioners developing adapted concepts

(Photo: W. Curjel, 1965, from Kempf 1985)

CC adaptation: risk distribution via increasing diversity ...



**Need to increase diversity in various ways
(species, functions & services, management strategies)**

(Photo: A. Rigling)

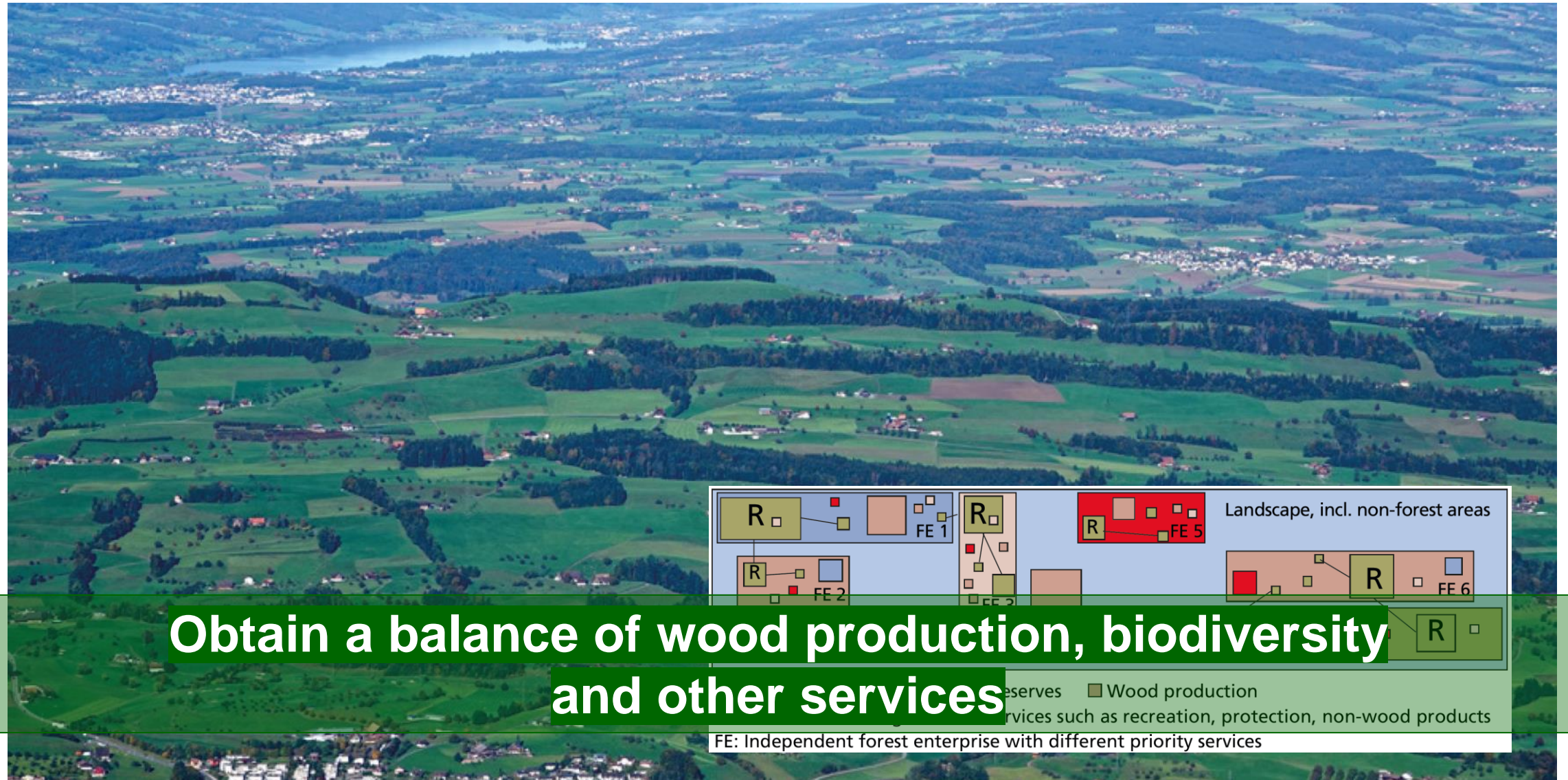
To preserve biodiversity may cause expenses but provides different services...



Need to calculate the true costs behind the production of wood, conservation and other public goods and services

(Photo: A. Rigling)

To preserve biodiversity may cause expenses but provides different services...



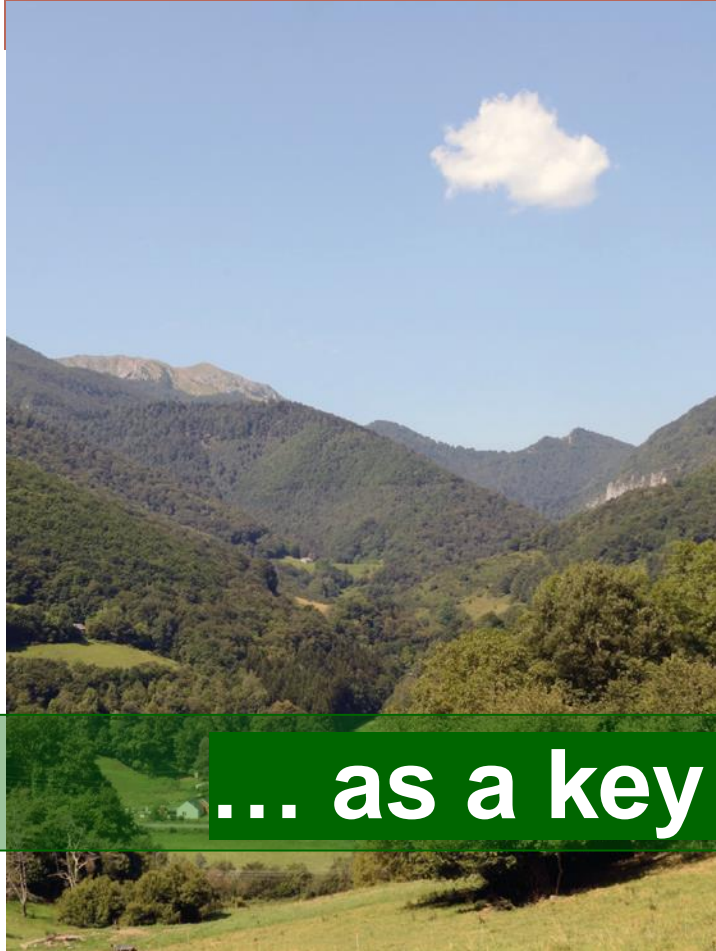
(Photo: A. Rigling)

... identifying and learning from good practice examples ...

Hèches – 'Groupement Forestier des montagnes particulières de': a case from the mountains of southwestern France

C9

L. Larrieu¹, G. Verdier²



(Photo: Laurent Larrieu)

Ecoparks – Forest landscapes in Sweden with emphasis on biodiversity conservation and recreation

C15

P. Bergman¹, L. Gustafsson²



(Photo: Sveaskog)

Cairngorms Forests – A rich heritage of native timber production

C26

W. Boyd-Wallis, D. Hetherington
Cairngorms National Park Authority



(Photo: Damian Shields, VisitScotland/CNPA).

... as a key task of the Integrate Network!



Swiss Federal Institute for Forest, Snow and Landscape Research WSL

Thank you!

Prof. Dr. Beate Jessel

Director