

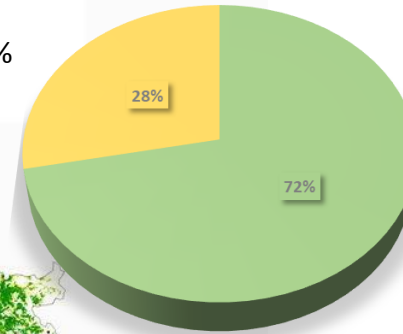
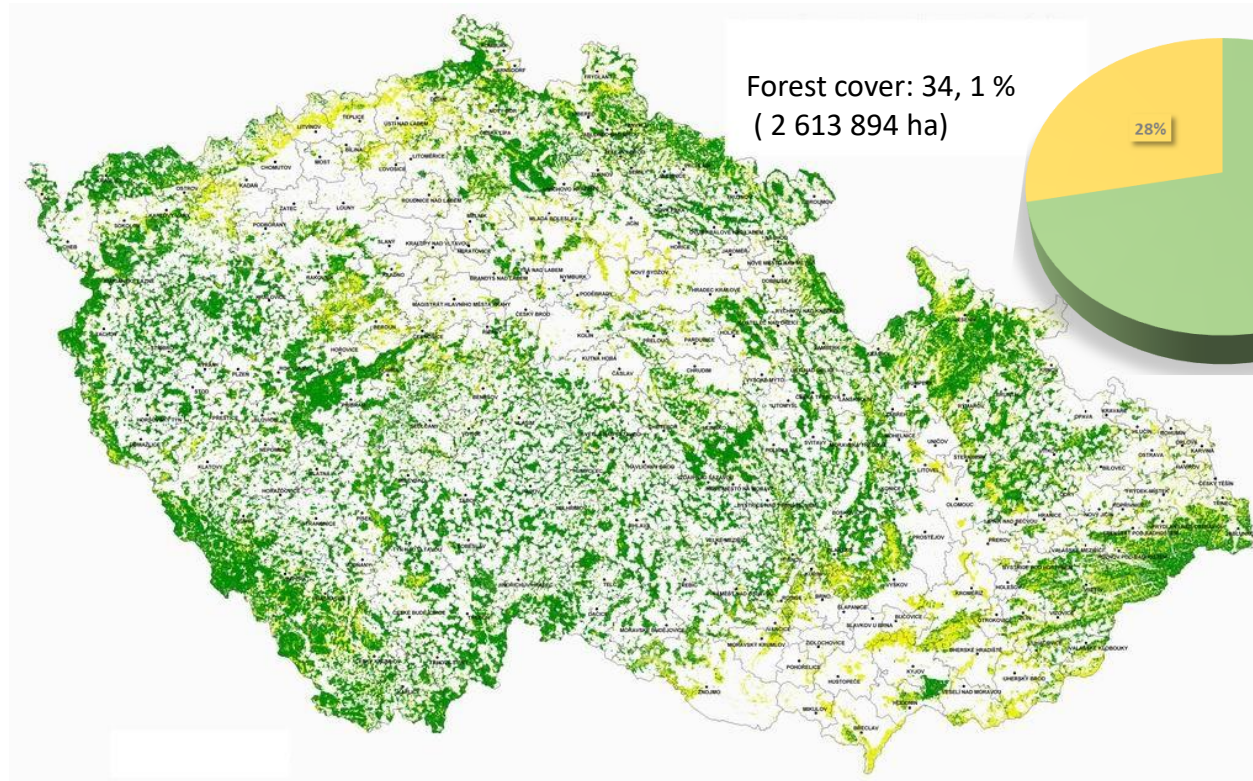
# Martelocopes in Czech Republic

28. 6. 2022, Bonn

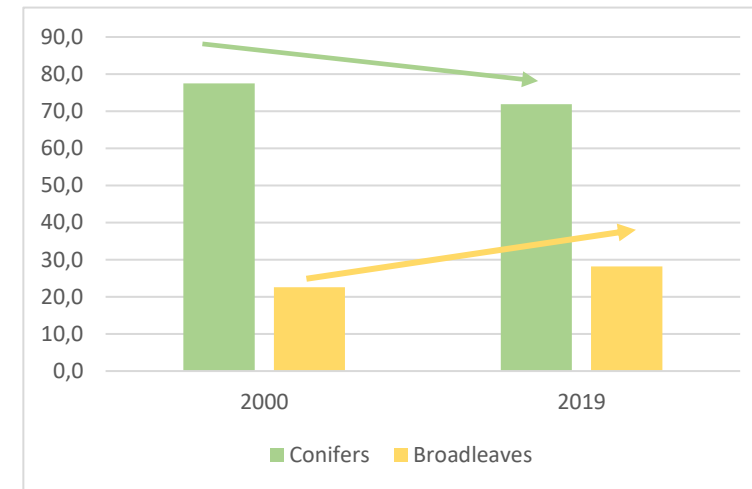
Ing. Lenka Lehnerová Ph.D.



# Forest in Czech Republic

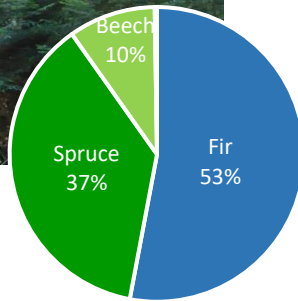


Species	%
Norway spruce	49,54
Fir	1,2
Pine	16,1
Larch	3,8
Other conifers	0,3
Oak	7,4
Beech	8,8
Birch	2,8
Other broadleaves	8,8



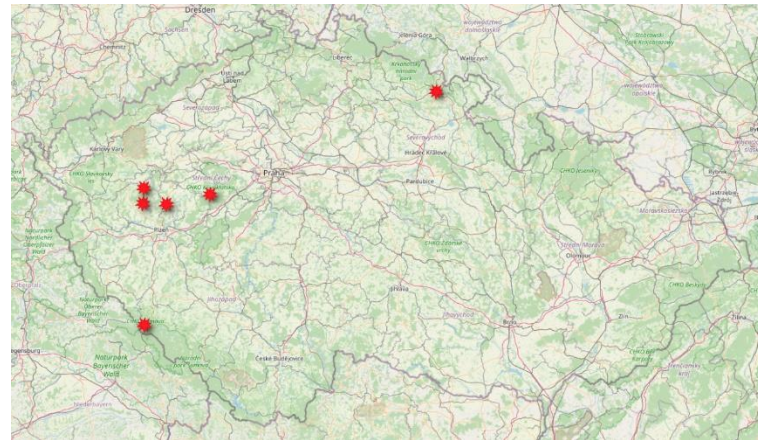


## Královský hvozd – Spruce

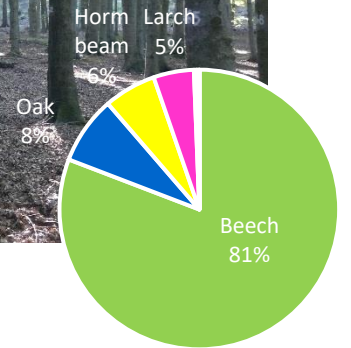
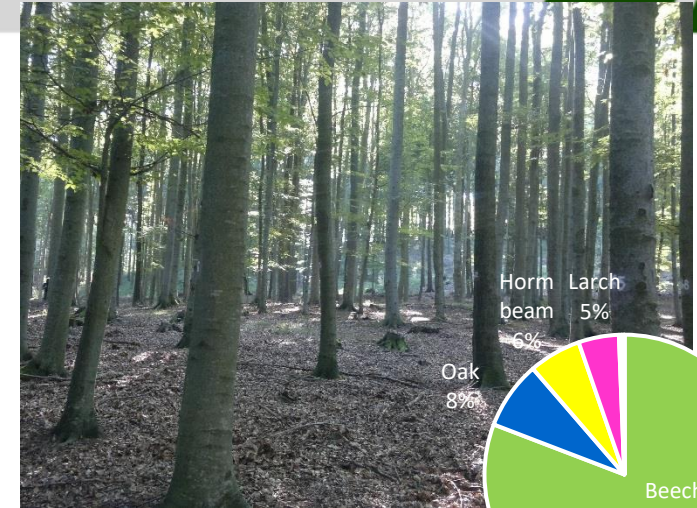


## Summary of Integrate+ Martelosopes in Czech Republic

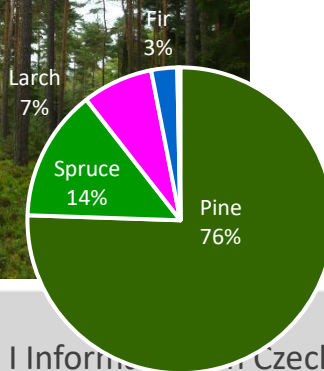
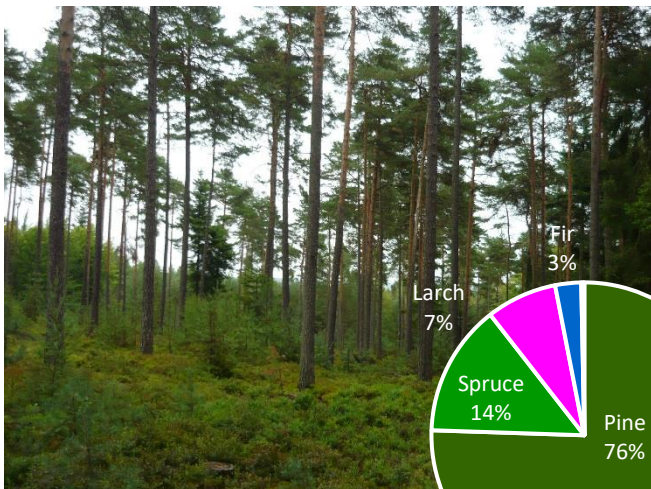
- production forest
- easy availability
- basic economic species



## Křivoklát – Beech

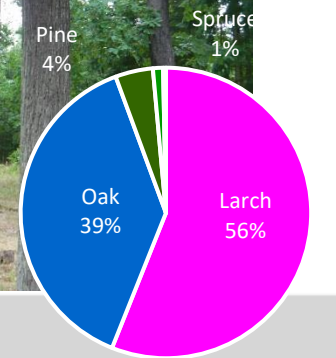
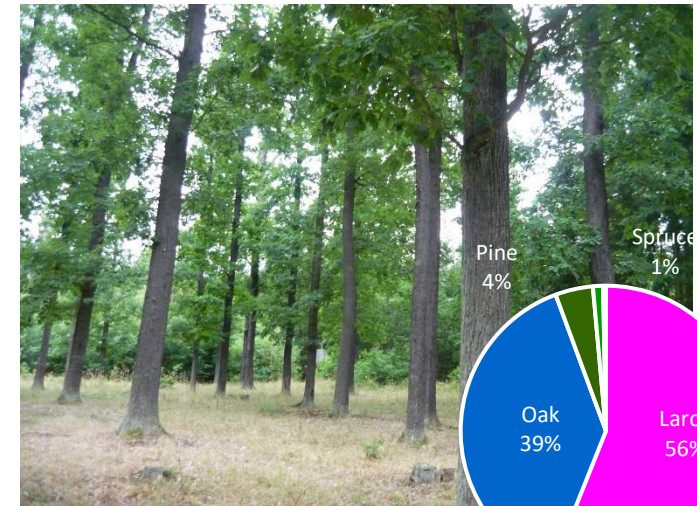


## Manětínská vrchovina - Pine

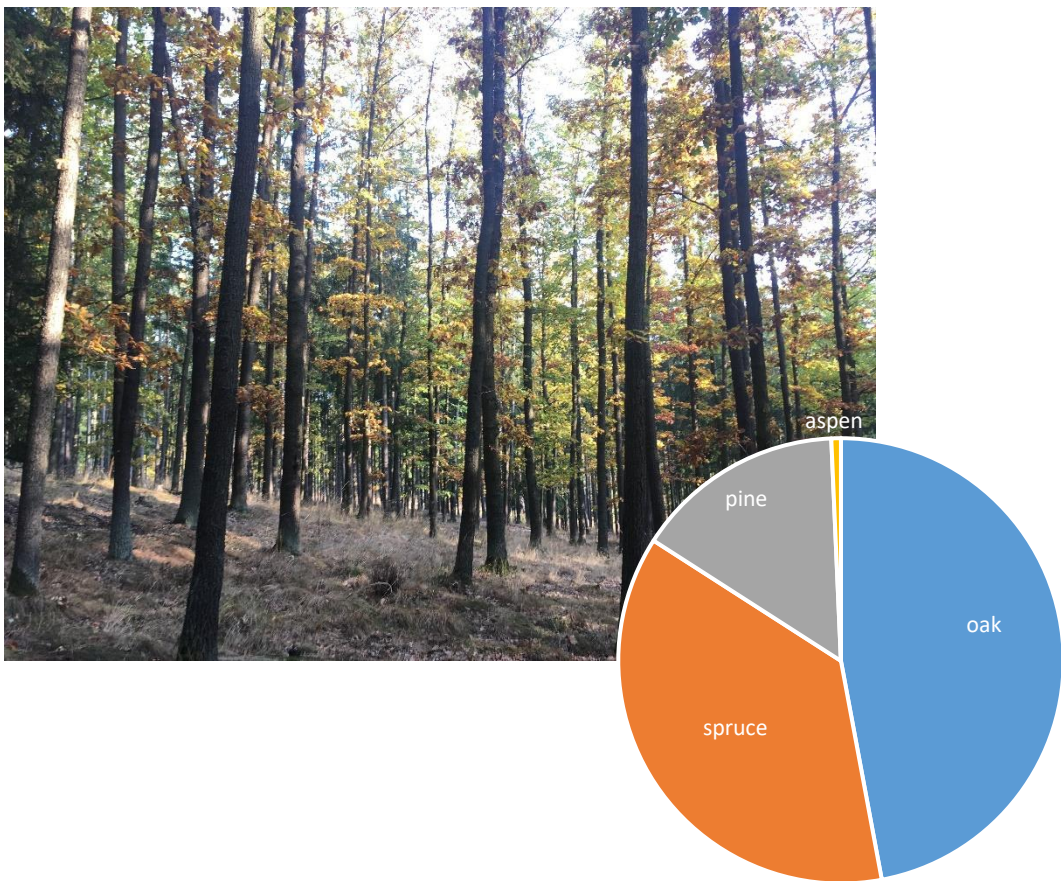


Name	Volume [m3]	Basal area [m2]	Number of trees	Habitat points
Čečiny	480,1	38,1	387	1361
Královský hvozd	328,7	28,7	448	1092
Křivoklát	435,6	34,2	523	1952
Manětínská vrchovina	156,6	19,3	316	926
Chlumská hora	306,9	27,3	480	734
Trutnov	555,5	43,2	495	1105

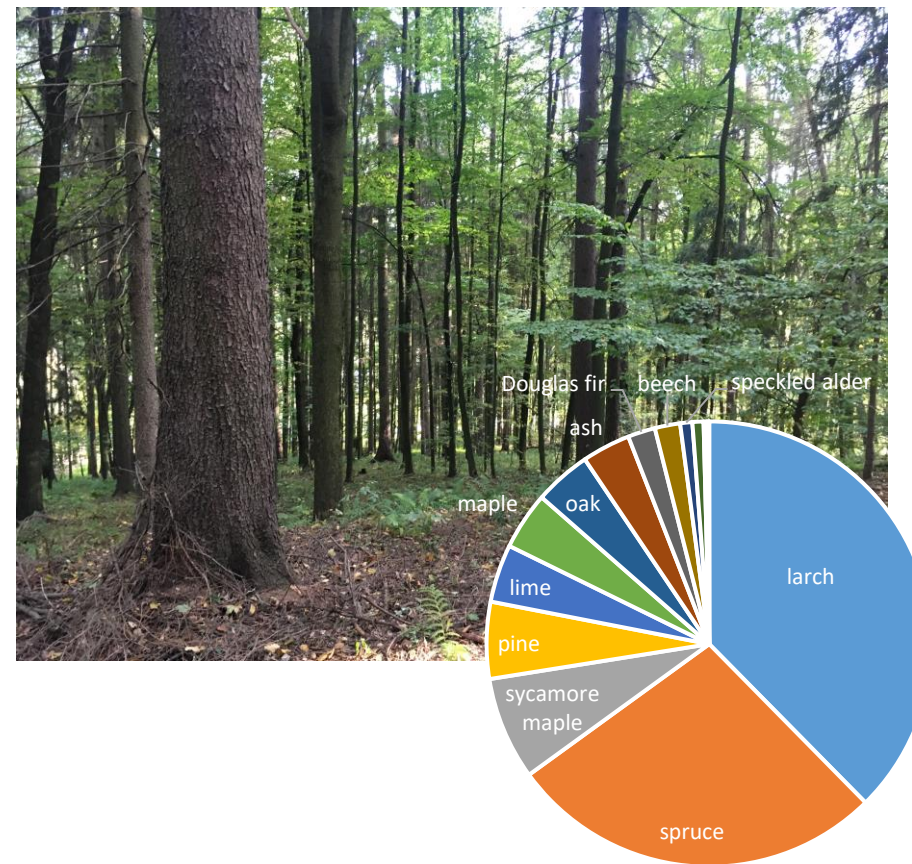
## Čečiny – Oak



## Chlumská hora - Oak



## Trunov - Mixed stand



# Application and events

Forest of Czech Republic

- state forest enterprise
- systematic trainings of employees



Forest secondary school in Žlutice



Secondary and higher forest school in Trutnov

Česká lesnická akademie Trutnov  
střední škola a vyšší odborná škola



## Subsidies

- habitat trees (support of the limited number of habitat trees, rules and conditions are setting by Ministry of Agriculture)
- increase of interest in M-scopes (The Association of Municipal, Private and Church Forest Owners in the Czech Republic)

# Thank you for your attention!

