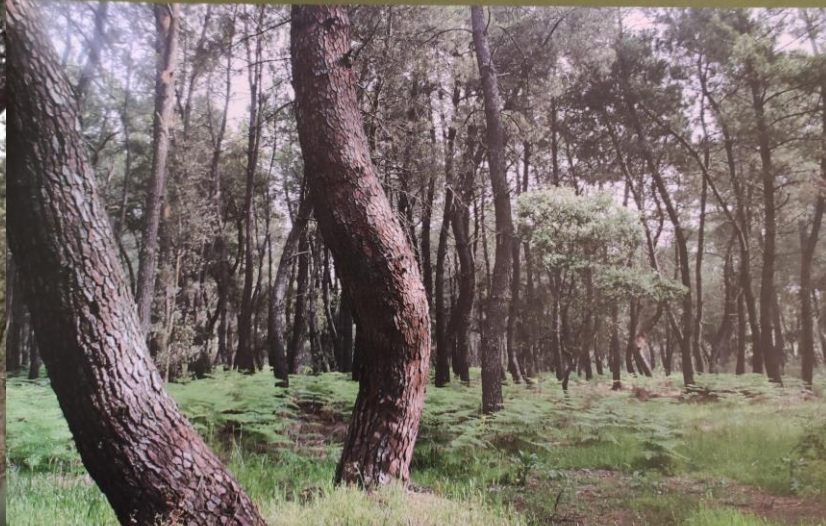


**DIRECTRICES PARA LA
ORDENACIÓN Y GESTIÓN
FORESTAL SOSTENIBLE
DE LOS PINARES DEL
CORREDOR ECOLÓGICO
DEL TIÉTAR**

(para entendernos)



JUNTA DE EXTREMADURA

Consejería de Medio Ambiente y Rural,
Políticas Agrarias y Territorio



UNIÓN EUROPEA

Fondo Europeo de Desarrollo Regional

Invertimos en su futuro.

**MANAGEMENT OF PUBLIC WOODLANDS IN THE
BIODIVERSITY CORRIDOR OF “PINE FORESTS ALONG RIVER
TIETAR IN TALAYUELA” AND INTEGRATE NETWORK .**

MANAGEMENT OF PUBLIC WOODLANDS IN THE BIODIVERSITY CORRIDOR OF “PINE FORESTS ALONG RIVER TIETAR IN TALAYUELA” AND INTEGRATE NETWORK .

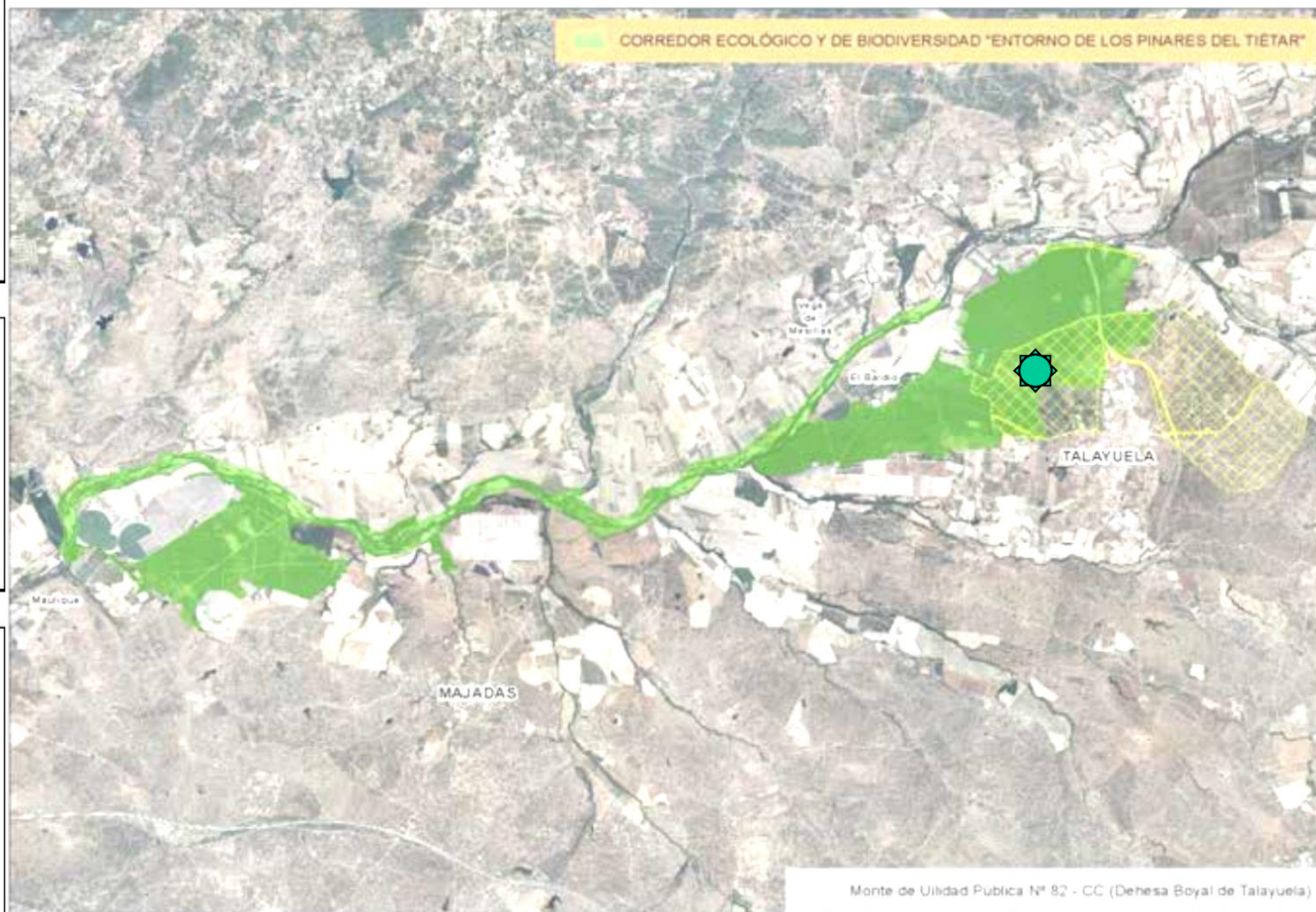
SPECIAL natural PINE FOREST

With *Pinus pinaster* ssp.mesogeensis (maritime pine - pino rodeno, negral o resinero-) along with *Quercus pyrenaica*, *Quercus faginea*, *Quercus suber*, *Quercus rotundifolia*, *Fraxinus angustifolia*, *Ulmus laevis*, etc. Along sandy poor soils in the plain banks and basin of River Tietar in Extremadura.

SPECIAL FORESTRY PLANING AND MANAGING GUIDELINES

BIODIVERSITY CORRIDOR OF
“PINE FORESTS ALONG RIVER TIETAR-TALAYUELA” **2.396 ha.**
Nature 2000 network, Protected Area in Extremadura.

GUIDELINES CAME FROM AN UNDESTANDING BETWEEN
LOCAL CITIZENS AND FORESTRY MANAGERS

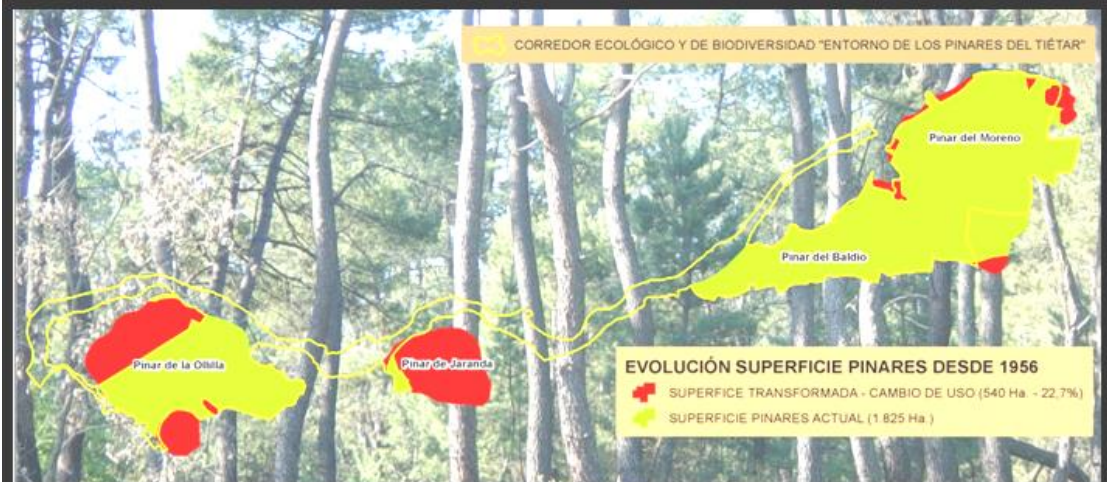


 MARTELOSCOPE

Since Middle Ages the Pine Forests of River Tietar has been decreasing its size continuously.

MAJOR HAZARD

During the 20th Century with the construction of Rosarito Reservoir thousands of hectares irrigation lands were developed (tobacco crops), and installation of new energies plants (solar-thermal power plant)



ECOLOGICAL MAIN FEATURES

Altitude: 264 m.a.s.l. Completely plain riverbanks.

Ecoregion: Sclerophyllous and semi-deciduous forest of the Iberian Peninsula.

Soil: Sandy. Distric Arenosol.

Geology: Siliceous sedimentary rocks, formed by sandstones and conglomerates.

Average annual temperature: 15 °C.

Annual rainfall: 850 mm.

Forest type: Pine forest of *Pinus pinaster mesogeensis* with *Quercus pyrenaica*.

Dead wood on the ground: 0.1 m³.

ENVIRONMENTAL MAIN CHARACTERISTICS

"Surrounded by a highly anthropized environment, with cultivation plots (tobacco, red peppers, etc.), villages, new energies plants, etc, the pine forests are of great landscape and ornithological interest.

The presence of up to 4 species of Quercus stands out (Q. pyrenaica, Q. ilex, Q. faginea and Q. suber), that intermingle in the shade of the pine forest."



Habitats of European Community interest (92/43/CEE)

"Mediterranean pine forests of endemic mesogeian pines" (Cod. 9540)

The pine forests are home to a varied protected birdlife of natural interest for its conservation in the protected site.

Included in the catalog of threatened species at regional and national level, and in Annex I of Directive 2009/147/EEC.

Black stork, booted eagle, short-toed eagle, sparrowhawk, goshawk, honey buzzard and black kite reproduce in these pine forests.





The tree fellings that are carried out have important limitations in protected bird nesting and breeding areas.



OTHER PROTECTED SPECIES THAT LIVE IN THE PINE FOREST

- * CABRERA'S VOLE
(*Microtus cabrerae*)
- * MEHELY'S HORSESHOE BAT
(*Rhinolophus mehelyi*)
- * MEDITERRANEAN HORSESHOE
BAT (*Rhinolophus euryale*)
- * BECHSTEIN'S BAT
(*Myotis bechsteinii*)
- * EUROPEAN POND TERRAPIN
(*Emys orbicularis*)
- * DRAGON FLIES (*Coenagrion
mercuriale, Oxygastria curtisii,
Gamphus graslinii*)



BAT ARTIFICIAL NEST BOXES



MULTIFUNCTIONAL PINE FOREST MANAGEMENT

**OBTAIN SUSTAINABLE FOREST PRODUCTS: WOOD PRODUCTS;
TIMBER, FUELWOOD, CHARCOAL.**

**NON-WOOD PRODUCTS: RESINS, GAME, GRASSLANDS FOR
LIVESTOCK, HONEY, MUSHROOMS.**

**FOREST SERVICES: PROTECTION OF WATERSHEDS,
REGULATION OF WATER FLOWS, EROSION CONTROL, PROVISION
FOR WILDLIFE HABITAT, RECREATIONAL RESOURCES, CARBON
FIXATION**

(PUBLIC LANDS 444,46ha)



IMPROVEMENT WORK'S

1st REVISION OF FOREST MANAGEMENT PLAN (2.015)

PUBLIC WOODLAND 82 OF CACERES PROVINCE

“DEHESA BOYAL DE TALAYUELA”

INCLUDED IN Balbuena, E., Blanco, J., 2015. Primera Revisión del Proyecto de Ordenación del Monte de U. P. nº 82 “Dehesa Boyal” de Talayuela (Cáceres). Consejería de Medio Ambiente y Rural, Políticas Agrarias y Territorio. Dirección General de Medio Ambiente. Junta de Extremadura. Tragsatec. 182 p.

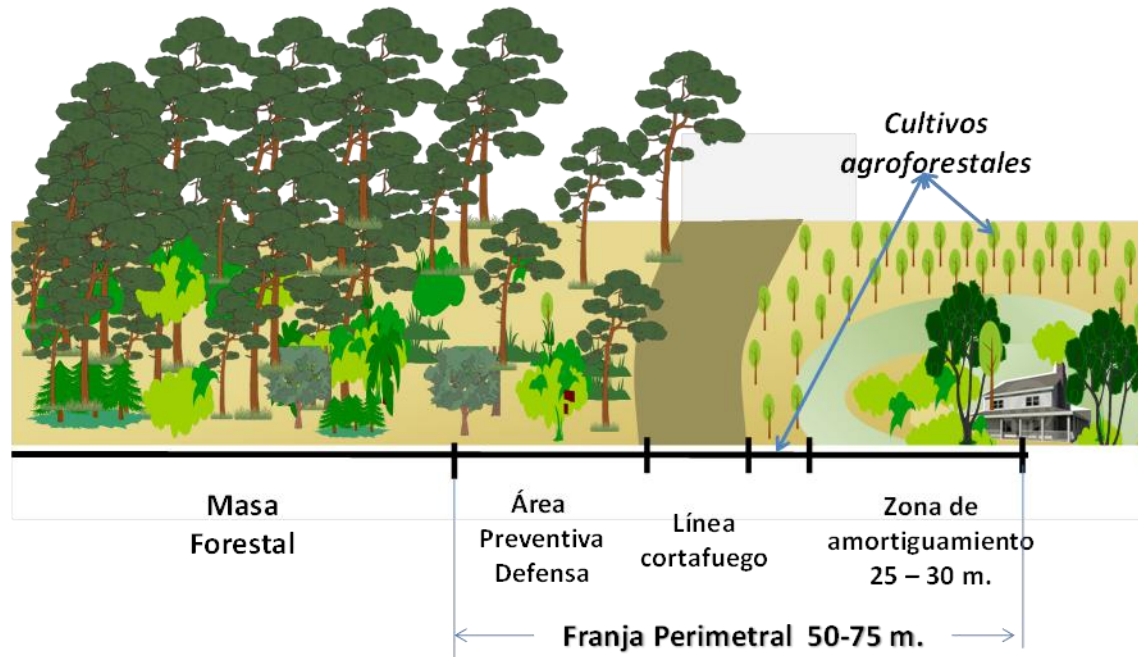
FIRST PLAN 1.972



**FOREST CLEARINGS AND FELLINGS OF WOOD
(2.800 m³ average growth) ARE DESIGNED
FOR OBTAINING A FOREST STRUCTURE
PRODUCTIVE IN TIMBER AND SURE AGAINST FOREST FIRES**



**YEAR 2.020: 8.000m³ OF TIMBER WERE HARVESTED
IN 93,5 ha ACCORDING TO THE MANAGEMENT PLAN**



SPECIFIC MEDITERRANEAN SILVICULTURE FOR PROTECTION AGAINST FOREST FIRES.

CREATION AND MAINTENANCE OF:

- FIREBREAKS AND NETWORK OF PATHS
- CLEARED TRACTS NEAR PATHS
- WATER DEPOSITS OR PONDS



INSTALLATION OF MARTELOSCOPE IN TALAYUELA PINE FOREST TAKES PLACE IN 2.021-2.022

In the year 2015 the Network for the Integration of the Conservation of Biodiversity in Forest Management, known as Red INTEGRATE (Red I+) is created.

Main goal harmonization of forest management and biodiversity conservation =

New tool.

Saproxylc Microhabitats	Cavities	CV1	Woodpecker cavities
		CV2	Trunk and mould cavities
		CV3	Branch holes
		CV4	Dendrotelms and water-filled holes
		CV5	Insect galleries and bore holes
	Injuries and Wounds	IN1	Bark loss / Exposed sapwood
		IN2	Exposed heartwood / Stem and crown breakage
		IN3	Cracks and scars
	Bark	BA1	Bark pockets
	Deadwood	DW1	Dead branches and limbs / crown deadwood
Epixylic Microhabitats	Growth form related microhabitats	GF1	Root buttress cavities
		GF2	Witch broom
		GF3	Cankers and burrs
	Epiphytic krypto- and phanerogams	EP1	Fruiting bodies fungi
		EP2	Myxomycetes
		EP3	Bryophytes
			Foliose lichens
			Lianas
	Nests and aeries	NE1	Nests / aeries
		Other microhabitats	OT1
OT2	Microsoil		

In the **INTEGRATE network**, the evaluation of the value of a habitat is carried out in a standardized way based on an extensive catalog of arboreal “micro-habitats” that has been compiled by biodiversity experts.



Marteloscopio Pinar de Talayuela

Guía de campo



CONCLUSION: MARTELOSCOPE PROVIDES A NEW TOOL

To follow the path of sustainability, through that diffuse intermediate zone between the utility and the preservation of the forest, between the general and the particular interest, trying to harmonize the multiple functions and the diverse objectives that converge in a forest space protected as unique as this one: an ideal image projected in three dimensions economic, ecological and social interests (multifunctionality).