

*Integrate + as tool for
field training and
demonstration of the
close to nature forest
management
implementation in
Western Balkan region*

Dr Nenad Petrovic

University of Belgrade, Faculty of Forestry

9th Annual Integrate Network Meeting

4th to 6th October 2023

Luxembourg



Integrate + activities

- Project funded by BMEL and implemented by SWG SEE
- Support of a Regional Expert Working Group on Sustainable Forest Management in the Western Balkan
- Regular national (Serbia) trainings of forest engineers as part of the continuous education and license holding and maintenance



Participants from Western Balkan

- Bosnia and Herzegovina
 - Montenegro
 - North Macedonia
 - Kosovo*
 - Albania
 - Serbia
- In total 28 participants



*UN resolution 1244

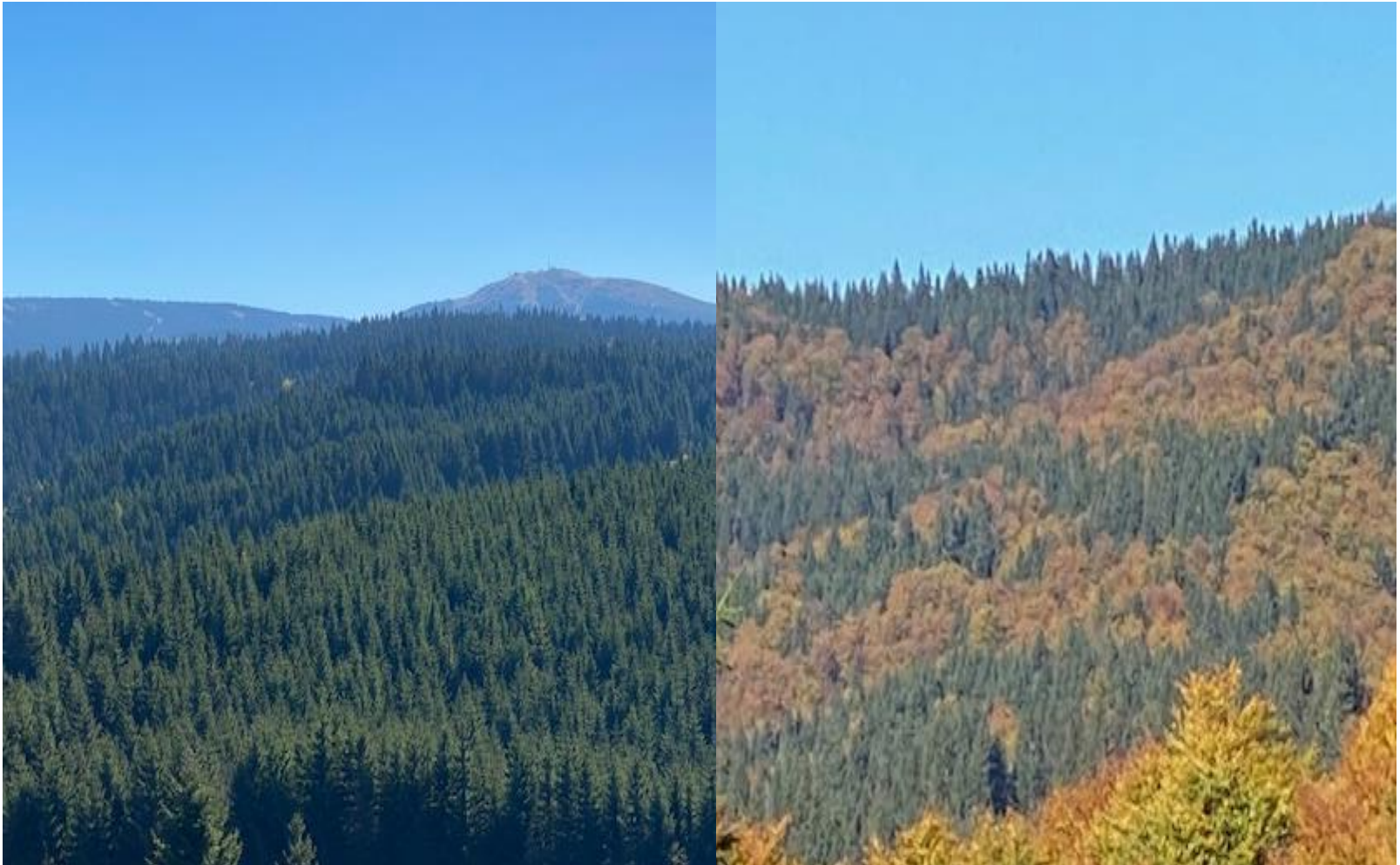
Project objectives

- Preparation, presentation and **discussion on concept of guidelines for forest management** on example of one forest management types/ tree species
- Selection of **relevant future trainer from the topic** i.e. silviculture or forest planning experts with experience and authority **that latter present new approach to the future trainers** in the respective country
- *Participation on **regional training regarding practical implementation of forest management guidelines on demonstration plots** in September 2023 in Serbia*
- Preparation of demonstration plot (0,1-0,2 ha) in the respective country and **organize practical demonstration of guidelines in the field to the future trainers.**

Management guidelines (MG)

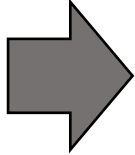
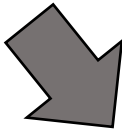
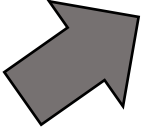
- Operational instrument in implementation of the close to nature forest management
- Praxis oriented, clear in objectives and targets to be achieved
- Active participation in the training on demonstration plots
- Using Integrate + software and demo plots for efficient and understandable effects on training decision on each demo plots
- Common discussion for better understanding objectives of the MG and possibilities for application in each country

Introduction to the Management Types:



Management type: What is it?

Management typ includes:

- **Current state**  **future management goals**
- In the name it contains the existing dominant tree species (eg: BEECH) and:
 1. **current state** 
 2. **Long-term management goal** 
- (example: *Coppice beech forests* – *High beech forests*)
- If we only have the existing state (High mixed beech forest), then the **existing state** (High mixed beech forest) is also the **long-term management goal**, or, the existing management type will be maintained in the future.



Guidelines for forest management



SADRŽAJ

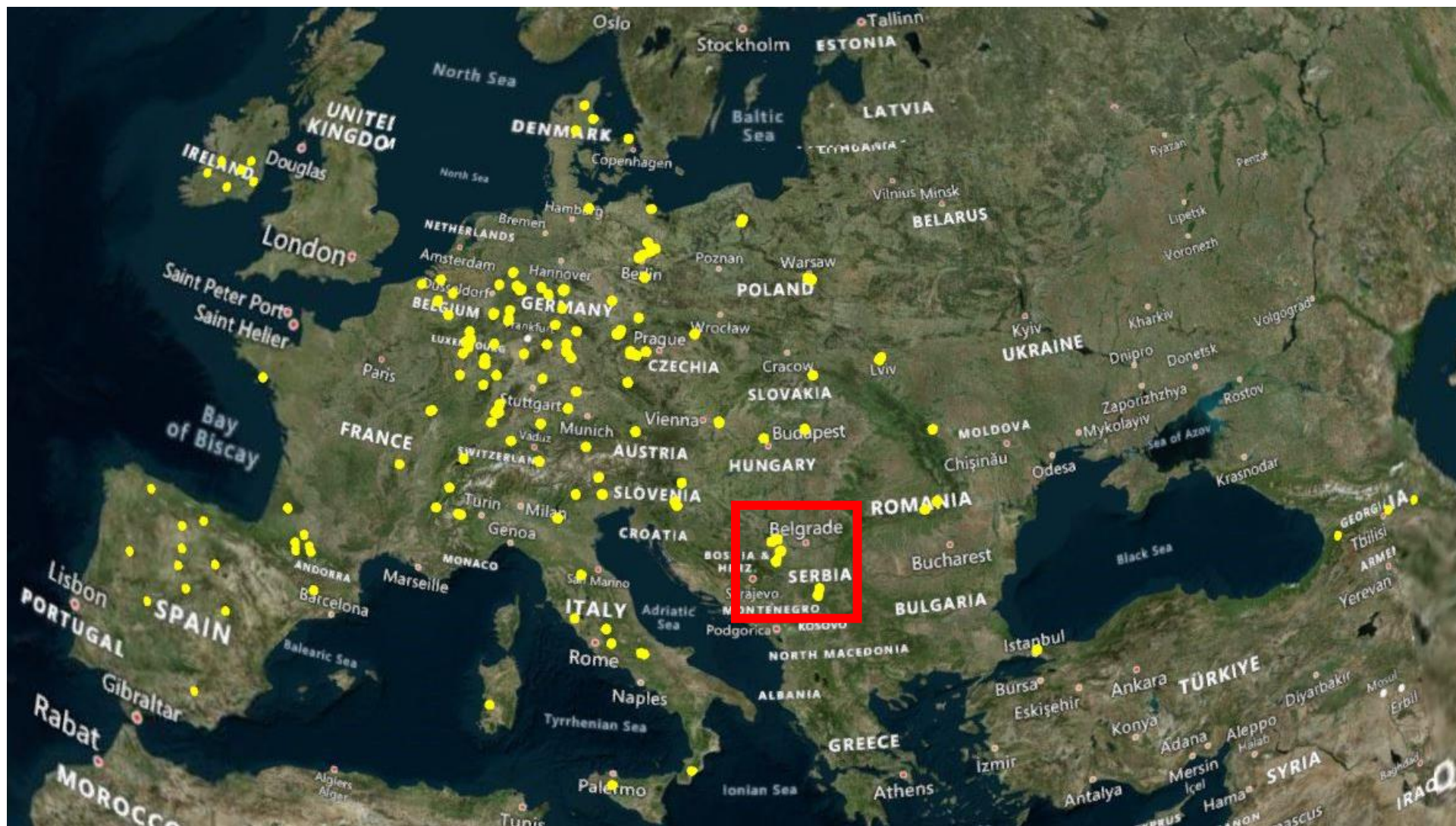
Skraćenice	5
1 UVOD	6
2 OPIS GAZDINSKIH TIPOVA	11
3 KLJUČ ZA IDENTIFIKACIJU GAZDINSKIH TIPOVA	14
4 KLJUČ ZA IDENTIFIKACIJU RAZVOJNIH FAZA/UZGOJNIH GRUPA UNUTAR GAZDINSKOG TIPAL7	
5 OPŠTE SMERNICE ZA KORIŠĆENJE UPUTSTAVA ZA GAZDOVANJE ŠUMAMA PO GAZDINSKIM TIPOVIMA	19
5.1 Gajeenje šuma	19
5.2 Nega šuma	20
5.3 Obnavljanje šuma	29
5.4 Veštačko obnavljanje šuma	36
5.5 Smernice za prirodne nepogode	40
6 GAZDINSKI TIPOVI U SRBIJI	43
6.1 GT 1110 Visoke mešovite šume OML	45
6.2 GT 1120 Izdanačke mešovite šume OML	45
6.3 GT 1121 Izdanačke mešovite šume OML - Visoke mešovite šume OML	45
6.4 GT 1210 Veštački podignute plantaže vrba i topola	45
6.5 GT 2310 Visoke mešovite šume poljskog jasena	45
6.6 GT 2410 Visoke mešovite šume lužnjaka	46
6.7 GT 2510 Visoke mešovite šume kitnjaka, sladuna i cera	65
6.8 GT 2620 Izdanačke mešovite šume hrastova	65
6.9 GT 2621 Izdanačke mešovite šume hrastova- Visoke šume hrastova i ostalih lišćara ..	66
6.10 GT 2721 Izdanačke mešovite šume lipa - Visoke šume lipa i ostalih lišćara	85
6.11 GT 2810 Visoke mešovite šume OTL	85
6.12 GT 2820 Izdanačke mešovite šume OTL	85
6.13 GT 2821 Izdanačke mešovite šume OTL - Visoke mešovite šume OTL	85
6.14 GT 2920 Izdanačke mešovite šume bagrema	85
6.15 GT 21010 Visoke mešovite šume javora i jasena	85
6.16 GT 21110 Visoke mešovite šume bukve	86
6.17 GT 21120 Izdanačke mešovite šume bukve	103
6.18 GT 21121 Izdanačke mešovite šume bukve - Visoke šume bukve i ostalih lišćara i četinara	104
6.19 GT 31210 Visoke mešovite šume borova	119



A vision of an improved and vital resource



Integrate + demo plots from Serbia (Goc training centar) as implementation hub



Two management types: **High mixed beech forest**

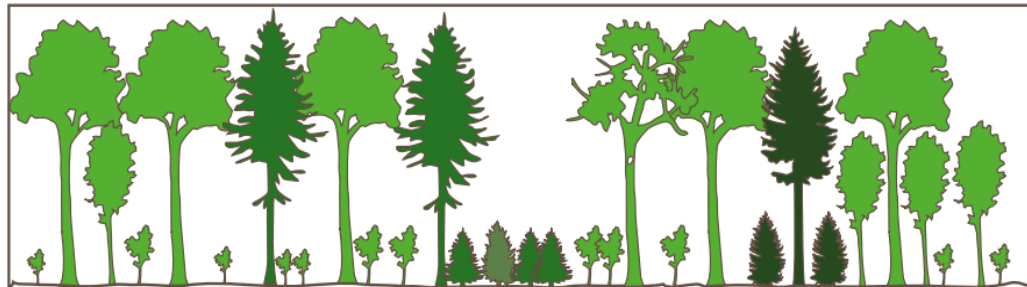


Two management types: Pine mixed forest



Objectives of the field training

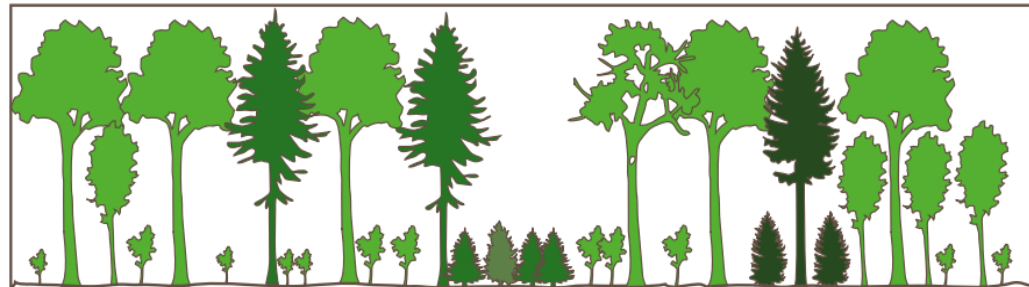
MT: High mixed beech forests



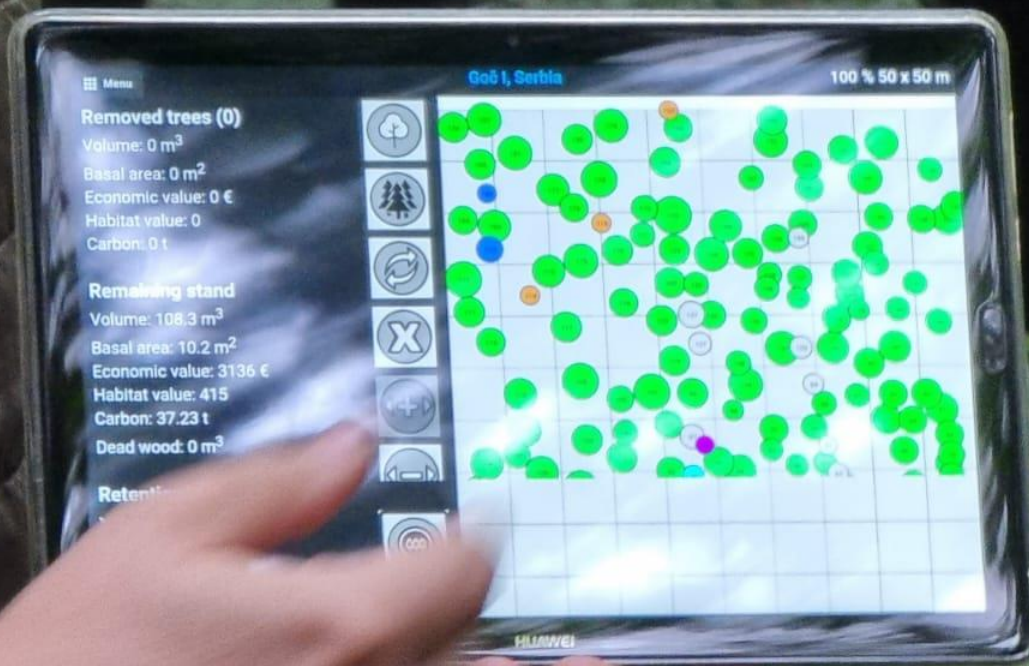
Parameters	The most productive sites	Sites with good productivity	Sites with medium productivity
Target diameter (beech:conifers:broadleaves), (cm)	>60-70-60	>50-60-50	>40-50-40
Distance between crop trees (m)	>12-14	>10-12	>8-10
Number of trees (N/ha)	>60-80	>80-100	>100-120
Production period (год)	110 до 130	110 до 130	110 до 130
Regeneration period (год)	20 до 40	20 до 40	20 до 40
Height of the dominant trees in the period of selection crop trees (m)	17-25	14-17	14-17
Length of trunk without branches (m)	8-10	6-8	6-8

Objectives of the field training

MT: High mixed pine forests



Parameters	Sites with good productivity	Sites with medium productivity
Target diameter (pine:other conifers:broadleaves), (cm)	>50-60-50	>40-50-40
Distance between crop trees (m)	>8-10	>6-8
Number of trees (N/ha)	>140-180	>220-260
Production period (year)	70 до 100	70 до 100
Regeneration period (year)	10 до 30	10 до 30
Height of the dominant trees in the period of selection crop trees (m)	10 до 12 (14)	10 до 12 (14)
Length of trunk without branches (m)	6-8	6-8



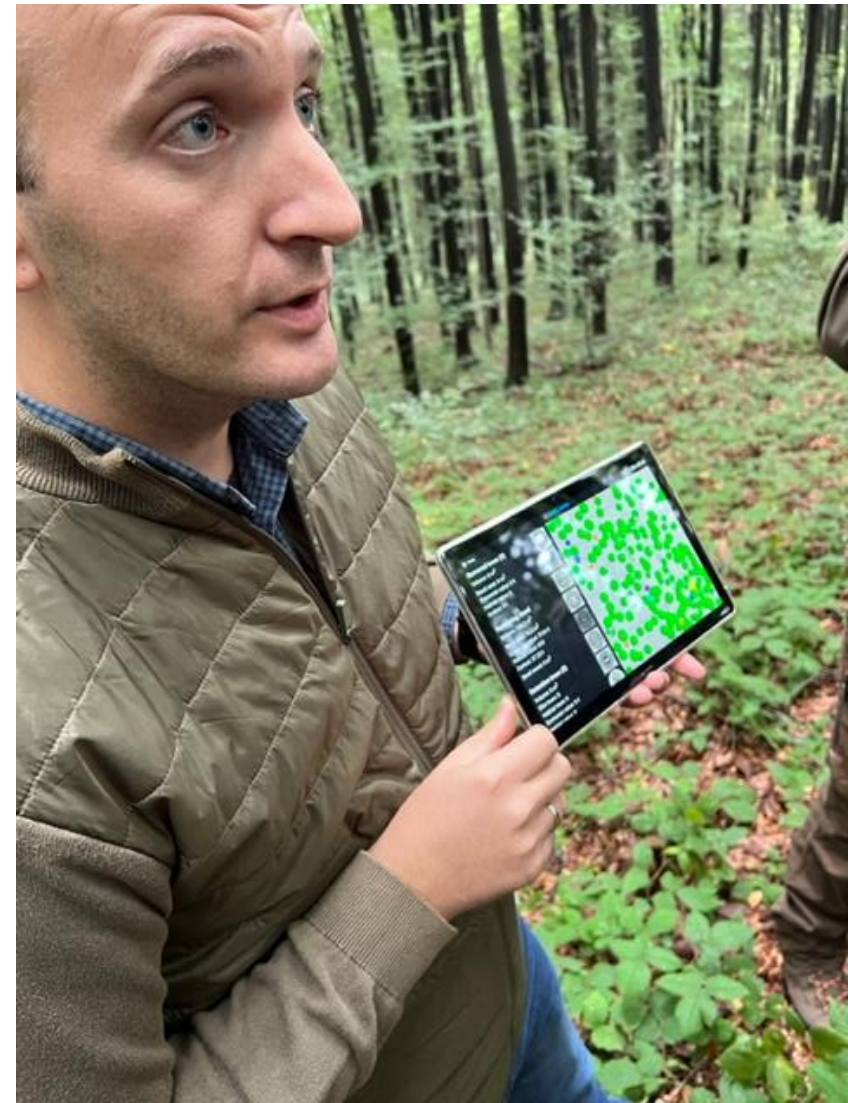
Presentation of the Integrate software in the classroom



Presentation of the Integrate software in the field



Presentation of the Integrate software in the field



Group work (4 teams): Team leaders explain each group management objectives



Group work (4 teams): Independent implementation of the selected objectives

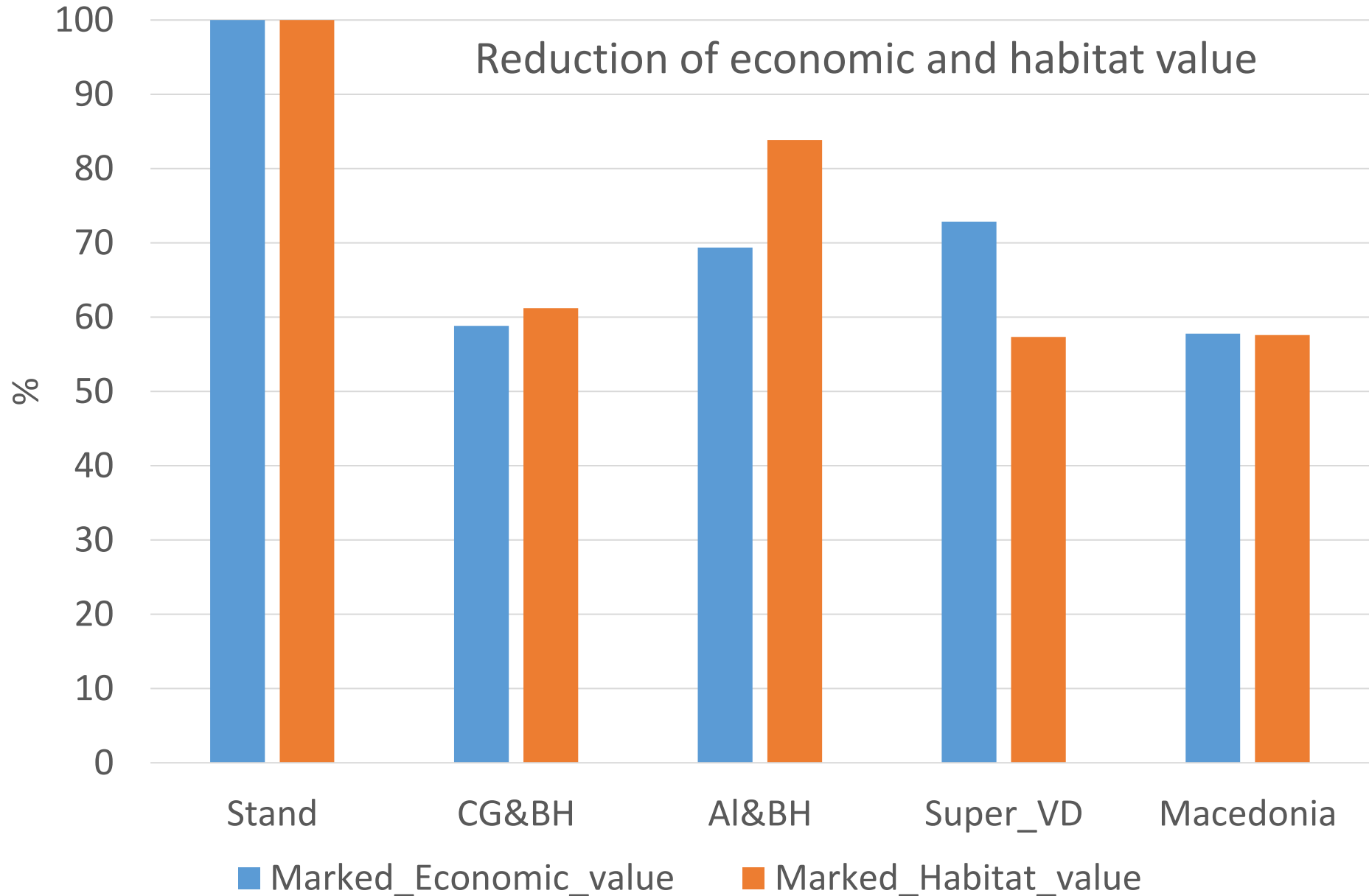


Evaluation of the field work and comparing results among the groups



	Stand	CG&BH	AI&BH	Super_VD	Macedonia
N+	12544	4380	7016	6844	6176
Ndoz		5164,0	3840,0	3404,0	5296,0

Evaluation of the field work and comparing results among the groups



Next steps

- Each team will prepare similar demo plots in each country
- Training week prepared by national expert groups in each country to demonstrate implementation and better understanding of the management guidelines
- Discussion regarding future development of MG, demo plots and training concept at national level
- Discussion on options for creating regional exchange program on WB green agenda implementation (possibility for connection with EU partners – state forest company Hessen Forest as example within this project)

General assessment and rediness to implement concept in the country

- „Very good approach, we will try to implement them very soon in Bosnia“
- „Very good training tool will se possibilities for implementation in Montenegro“
- „Very usful tool for training and promptly getting results of the decision taken, will see to implement them in N. Macedonia especially in coppice forests“
- „Very good concept for teaching forest praxis, forest owners and students about adaptation options in climate change environment, will adopt them in Albania especially in private forests“

Purple Beeches Henri Matisse 1901: Endowment of Prince Pavle, Belgrade

