

Forests and Forestry in Austria

- an Introduction

Dr. Georg Frank

Austrian Research Centre for Forests (BFW)

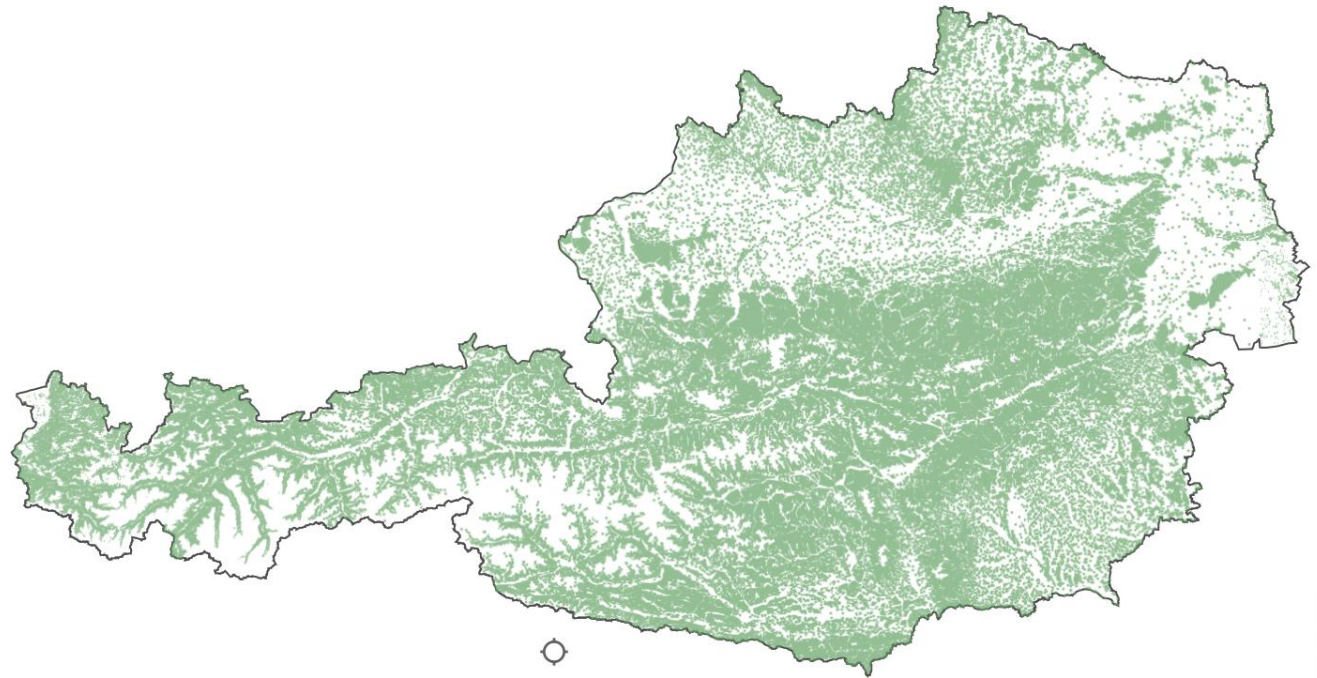
Natural Forest Reserves

Vienna, 23-102024

Characteristics of Austrian forests

Total Area: 8.38 Mio ha

Forests: 4.02 Mio ha = 47,9 %

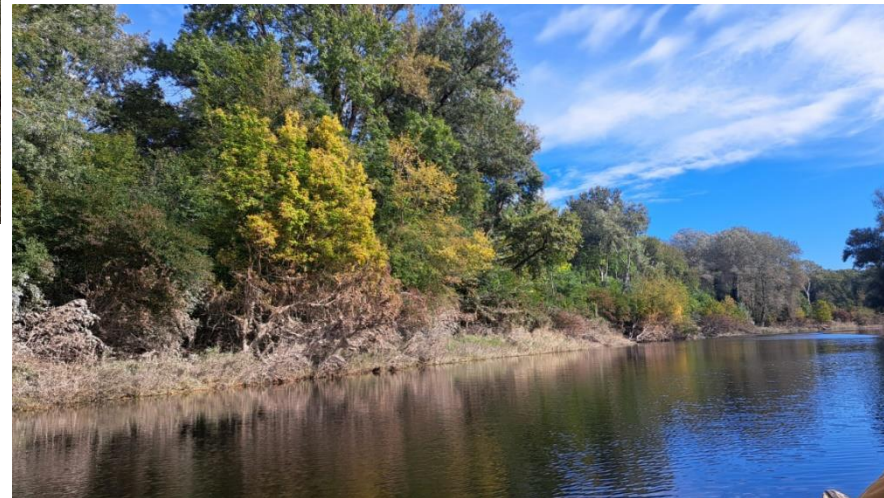


Characteristics of Austrian forests

- Forest types



117 forest types
(phytosociological level: association)



Characteristics of Austrian forests

- Forest types



zonal vegetation

Characteristics of Austrian forests

– Forest types



zonal vegetation

Characteristics of Austrian forests

– Forest types



zonal vegetation

Characteristics of Austrian forests

– Forest types

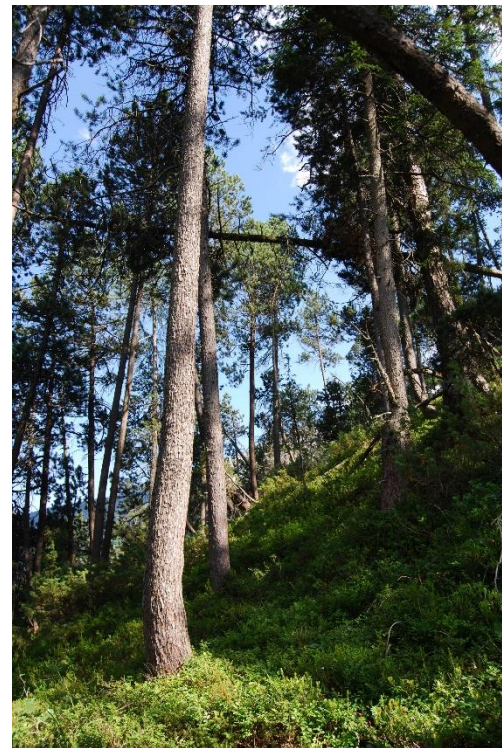
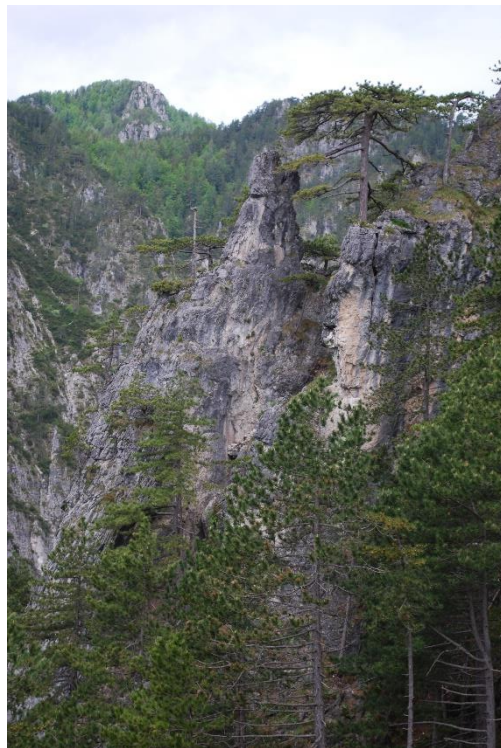
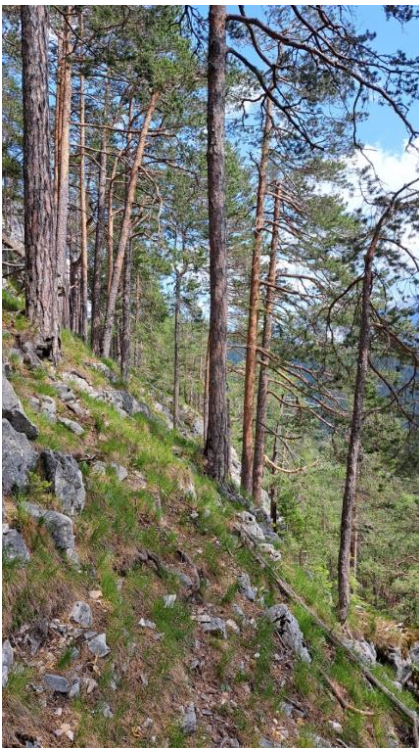


zonal vegetation

Characteristics of Austrian forests

- Forest types

azonal and extrazonal zonal vegetation



Characteristics of Austrian forests

– Forest types

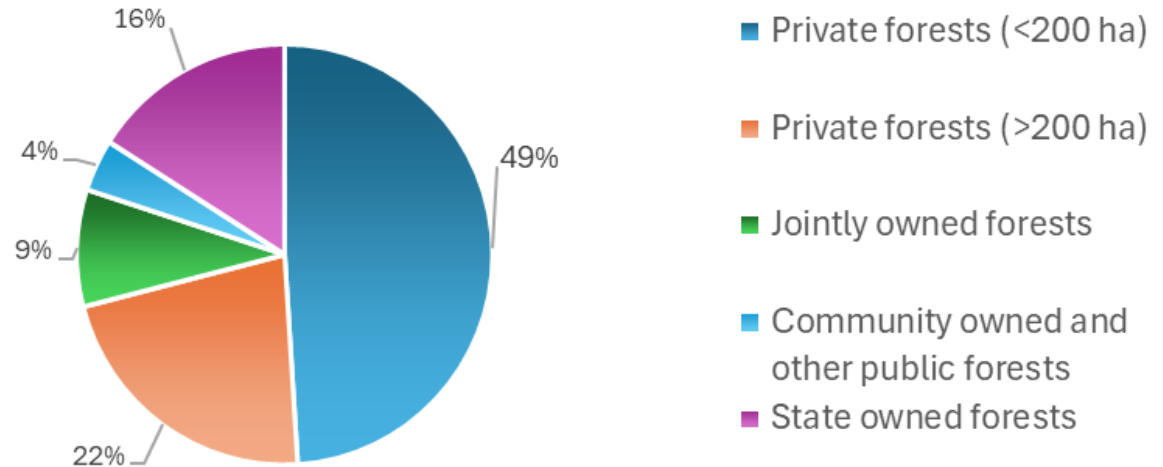
azonal and extrazonal zonal vegetation



Characteristics of Austrian forests



Ownership - structure



Ownership structure – diversity of management approaches

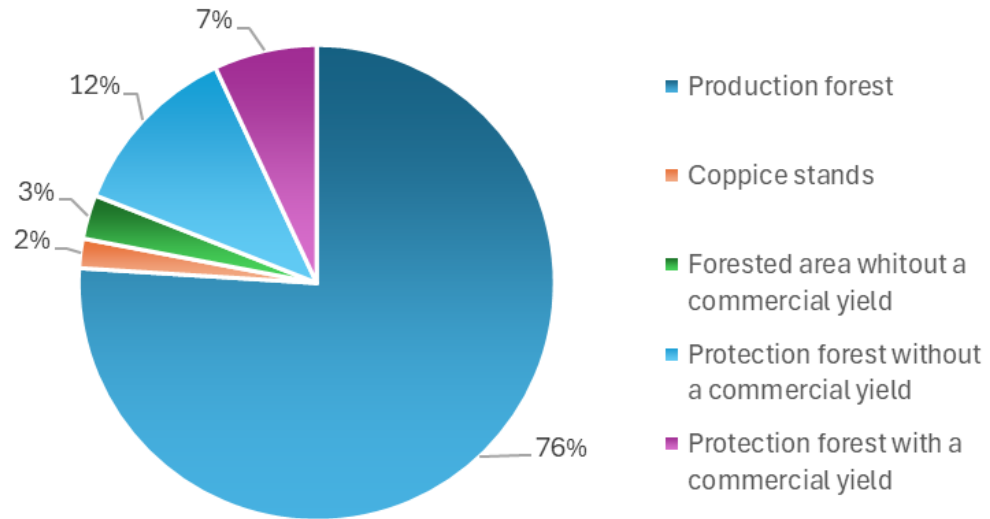


Ownership structure – diversity of management approaches



Characteristics of Austrian forests

Proportions of forest functions and silvicultural management methods



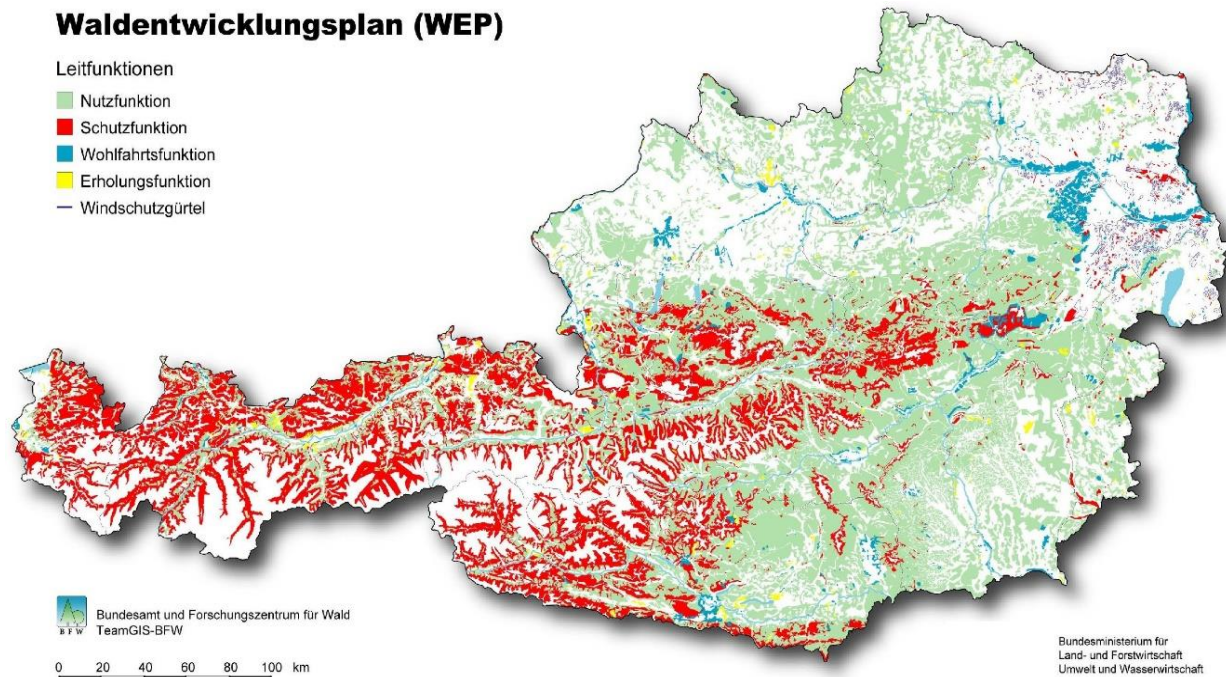
Characteristics of Austrian forests

Protective effects of forests – the Forest Development Plan (WEP)

Waldentwicklungsplan (WEP)

Leitfunktionen

-  Nutzfunktion
-  Schutzfunktion
-  Wohlfahrtsfunktion
-  Erholungsfunktion
-  Windschutzgürtel



Characteristics of Austrian Forests

Protective effects of forests

Clear distinction between protective forests on specific harsh sites (**site protective forests**) and ...

... and protective forests protecting human objects like settlements, infrastructure (**object protective forests**)



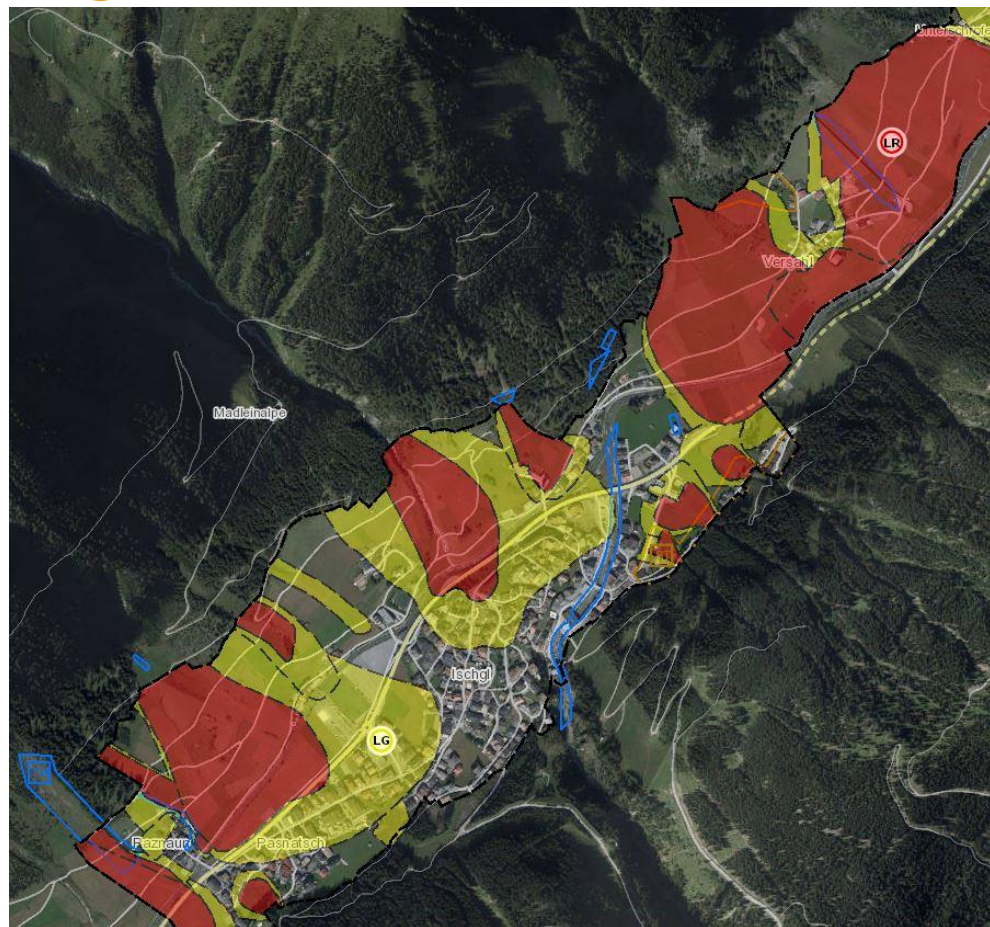
Spatial forestry planning

Hazard zone plan (Gefahrenzonenplan)

No planning in the overlaying forest
itself, but zoning in the underlying
planning-relevant area

- Red zone
- Yellow zone
- Rockfall und landslide risk zones
- Reserved zones

Forest-related projects in the
catchment areas

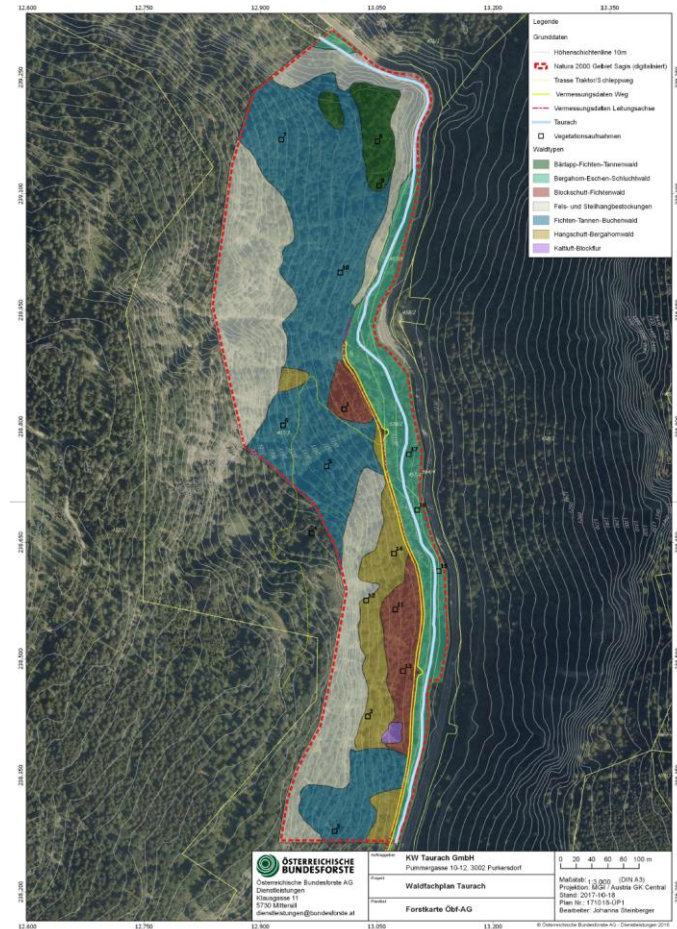


Spatial Forestry Planning

Technical Forestry Plan (Waldfachplan)

Very different contents (recreation, forest history etc.)

e.g. Conservation- and development measures in vulnerable FFH-habitat types (9410, 9180*, 6430)



Characteristics of Austrian Forests

Naturalness - Hemeroby

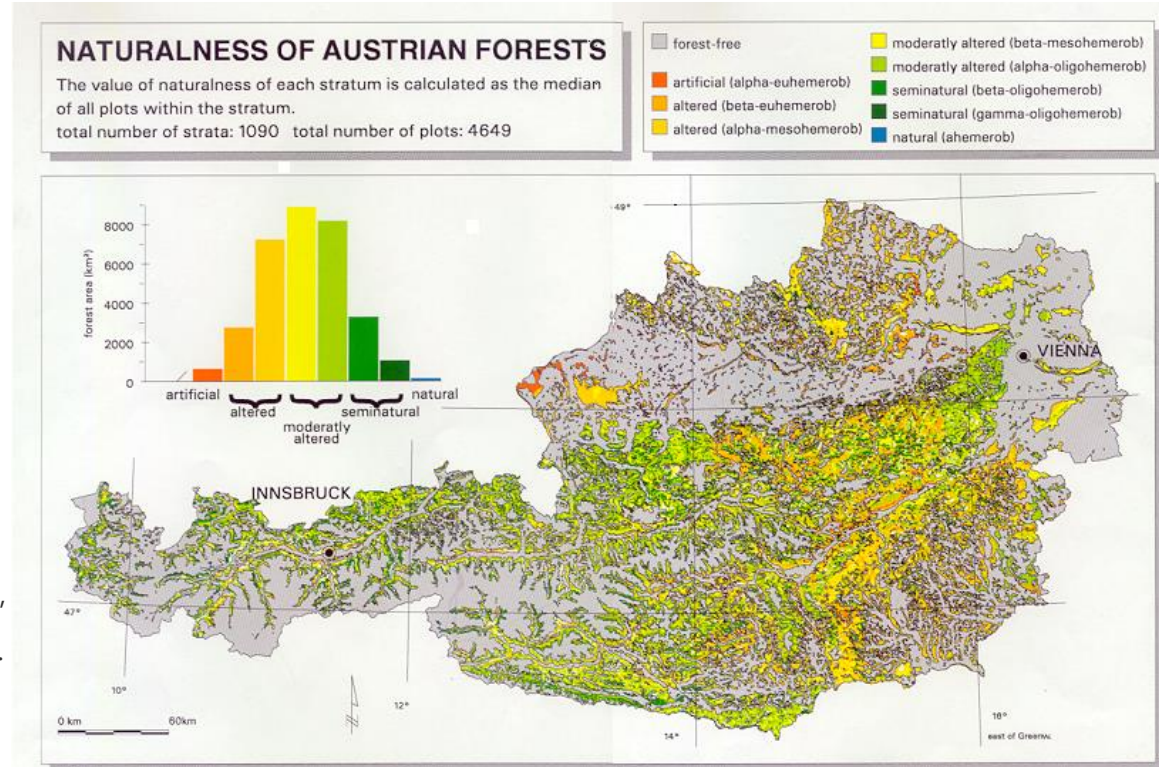
Hemeroby is the reciprocal value of closeness to nature

Carried out in 1992 – 98

Replication planned in 2010

**Feasibility study >
Replication very
difficult**

Grabherr G., Koch G., Kirchmeir H., Reiter K. 1988: Hemerobie österreichischer Waldökosysteme. Österreichische Akademie der Wissenschaften. MaB-Programm Bd. 17



Legal framework

Austria – the national frame

- **Forestry and Forest Management**



Legislation within the competence of the Federal Government

Administration in the responsibility of provinces and regional authorities

- **Nature and Landscape Conservation**
- **Hunting**



covered by 9 Federal Provinces

Exception: international agreements, relevant EC-programmes, e.g. Natura 2000, support of National Parks

→ **Federal Government**

Legal framework

SFM in Austria – the national frame

Forest law 1852 „Reichsforstgesetz“ as a basis

Very poor forest condition, degraded forests after overexploitation (forest grazing, large-scale clear-cutting, plundering)

Forest law 1975

Slight amendments 1977,....,1996 and 2002...., 2023

The Forest Act 1975 is intended to ensure the maintenance of forest resources and functions while at the same time allowing sustainable utilization

The Austrian forest law regulates the maintenance and use of forests in a sustainable way but it is not a nature protection act !!!



Foto | Filmstill aus „See Aural Woods“ (Luma.Launisch & Takamovsky)

Bundesforschungs- und Ausbildungszentrum
für Wald, Naturgefahren und Landschaft

Austria, 1131 Wien
Seckendorff-Gudent-Weg 8
Tel.: +43 1 878 38-0
direktion@bfw.gv.at
<http://www.bfw.ac.at>



<https://www.facebook.com/BundesforschungszentrumWald>



<https://twitter.com/bfwald>



<https://www.youtube.com/user/Waldforschung>