

# Promoting the Integrative Forest Management approach

*The state of art in the Italian context*

10th Annual Meeting  
of the European Integrate Network  
23rd to 25th October 2024  
Vienna, Austria



Serena Buscarini (D.R.E.Am Italia)

Silvia Ferlazzo (Ministry of Agriculture, Food Sovereignty and Forests)

Marcello Miozzo (D.R.E.Am Italia)

Enrico Pompei (Ministry of Agriculture, Food Sovereignty and Forests)

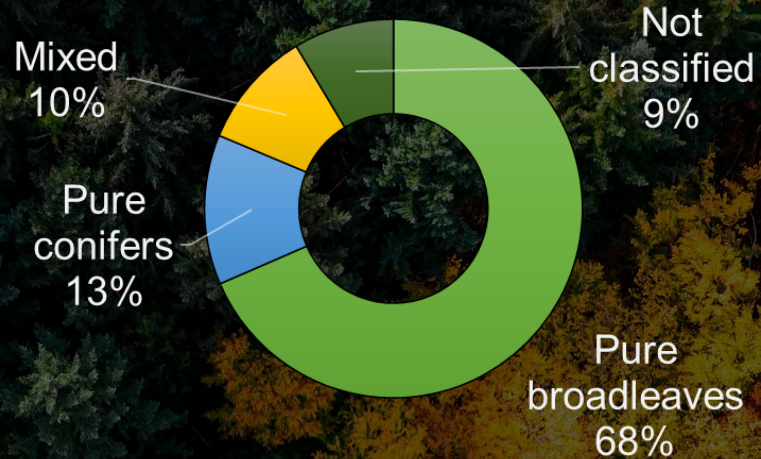
Giovanni Santopuoli (University of Molise)



# Italy's forests

11 million ha  
**30 % of total surface**

## Forests composition

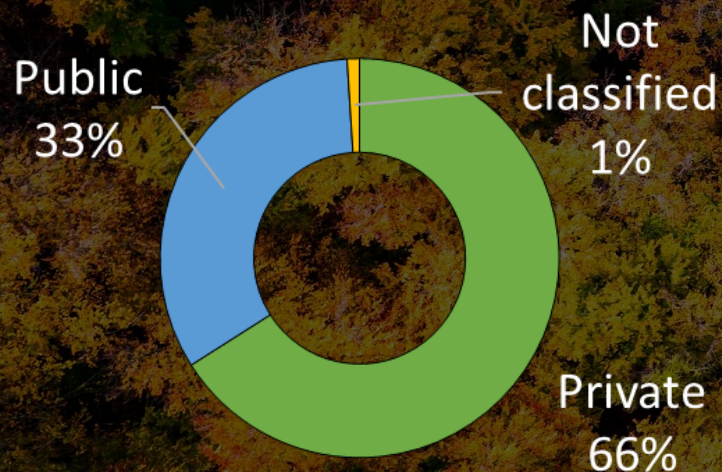


High stands **34 %**

Coppices **42 %**

Irregular forests **6 %**

## Forest ownership



Total forest volume: **1,4 billion m<sup>3</sup>**

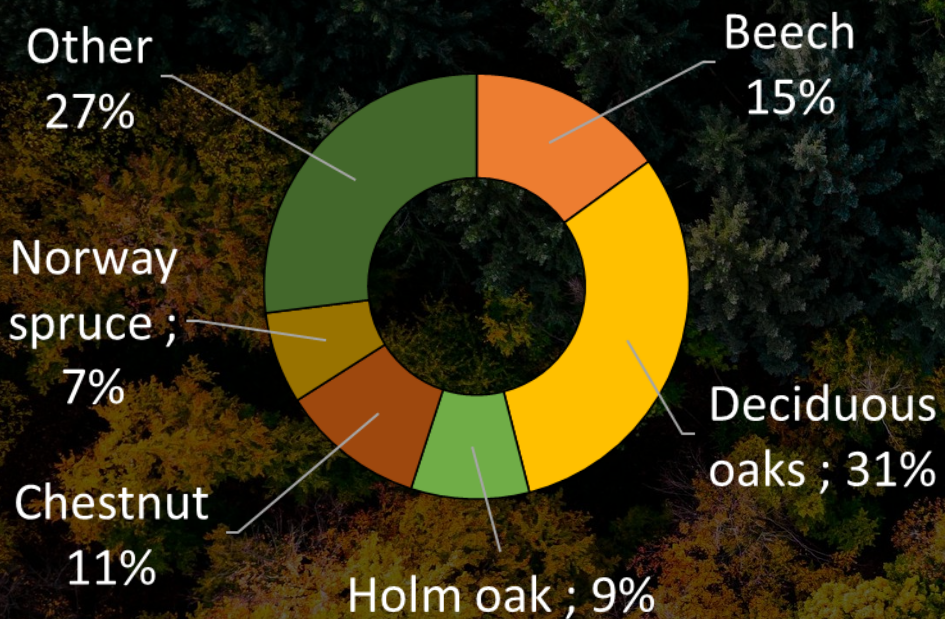
Growth rate: **40 million m<sup>3</sup>/year**

Average annual harvest: **35 %** of growth rate

**18 %** of forests are under planning

**No** Private forest owners association

# Forest Biodiversity in Italy



**117** tree species **2/3** of European tree species

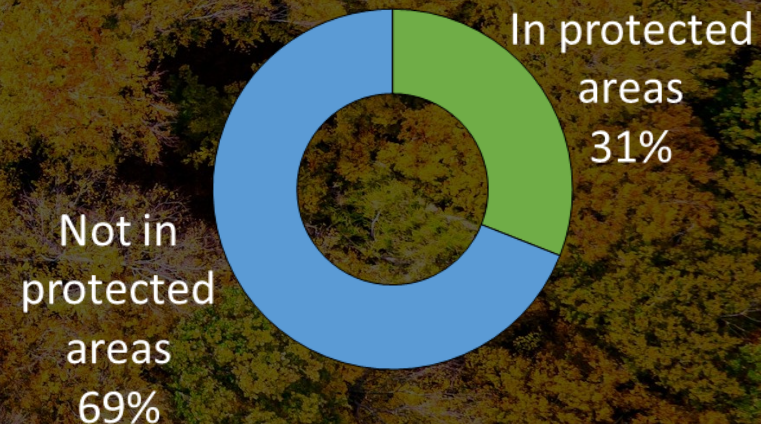
**23** forest types

Average deadwood amount: **13 m<sup>3</sup>/ha**

N2000 surface: **5,8 million ha**

**35 %** of N2000 surface is covered by forests

Forests included in protected areas



# Forest biodiversity in Italian law

**Consolidated Text on Forests  
and Supply Chains**  
**Legislative Decree No. 34 of April 3, 2018**

1. Sustainable Forest Management
2. Conservation of Forest Resources
3. Climate Change Mitigation
4. Promotion of Forest-Based Supply Chains
5. Coordination between National and Regional Authorities
6. Protection of Biodiversity
7. Preventing Abandonment and Forest Degradation
8. Public and Private Forest Responsibilities
9. Forest Fire Prevention

**National Biodiversity Strategy 2030**  
interconnected with Strategic Italian  
instruments such as  
**Italian Forest Strategy (2022)**, based on SFM



The legislation on forest management takes on a **regional dimension**, as each region has its own specific laws governing forest management practices.

# Activities which support integrative management in Italy

Life projects

Training

Financing tools at national level (PSR)

Forest certification

Pro Silva exemplary forests and demonstrative stands

Other activities at local scale

# Life projects



- Development of a database of **Good Practices** from LIFE projects on forest management and biodiversity conservation
- Development of training packages and transfer to public entities
- Adaptation of the **IBP (Potential Biodiversity Index)** methodology to the Italian context and support to regions for its implementation

- Implementation of **ecological network** and Continuous Cover Forestry in Mediterranean areas



- Implementation of a **saproxilic habitat network** to guarantee forest biodiversity conservation and forest management economic sustainability

- Development of **thinning approach**, to integrate wood production, climate regulation and biodiversity protection



# Training

Training courses for Experts in Biodiversity Conservation and Forest Management promoted by LIFE GoProFor project

Training sessions for students organized by universities

Training sessions organized by National Forestry Student's Association

Technical meetings organized by Pro Silva Italia



# Financing tools at national level

**SO4** - Contribute to climate change mitigation and adaptation, including through the reduction of greenhouse gas emissions and the improvement of carbon sequestration, as well as promoting sustainable energy;

**SO5** - Promote sustainable development and efficient management of natural resources such as water, soil, and air, including through the reduction of chemical dependency;

**SO6** - Help halt and reverse biodiversity loss, improve ecosystem services, and preserve habitats and landscapes.

Resources allocated for forestry interventions co-financed through the Rural Development Programme are reduced to **15%** compared to the previous financing programme (2014-2020) and correspond to **4%** of total PSN resources

Forest surface where commitments will be made to support forest protection and the management of ecosystem services cover **0,15%** of the total forested area

CAP 2023-2027

European level

PSN  
Strategic National Plan

National level

PSR  
Rural Development  
Programme

Regional level

# Sustainability certification

Both **FSC** (Forest Stewardship Council) and **PEFC** (Programme for the Endorsement of Forest Certification) use various **indicators** to assess the sustainability of forest management practices, particularly concerning the **biodiversity conservation**

PEFC methodology for the evaluation was developed based on the standard produced by the **Interreg BIOΔ4 project**, with adaptations and integrations mostly derived from the **IBP** manual, developed within the **LIFE GoProFor**

**60.500 ha** under FSC Ecosystem Services Procedure which correspond to **70%** of all FSC certified forests

In 2022 first company certified by PEFC for biodiversity conservation



# Pro Silva exemplary forests and demonstrative stands



## 6 demonstrative forests

Selection of forest stands considered particularly significant for expressing the management approach proposed by **PRO SILVA**, in very diverse conditions in terms of site, climate, and socio-economic factors



## 1 AFI (*Association Futaie Irrégulière*) stand

The AFI aims to promote the most effective management practices and silvicultural systems for irregular stand structures, endowing stands with greater resilience and providing managers with a better capacity to respond to external factors (climatic events, market fluctuation, changing social demands...)

# Other activities at local scale

- Tuscany region is introducing the IBP as an advised indicator to use in regional forest planning
- The **IBP methodology** is being introduced in the Tuscany region as a tool to support and fund interventions under the **Rural Development Programme**
- Molise region has introduced the use of IBP in regional forestry projects
- Increasing implementation of biodiversity conservation measures in small projects (deadwood release, Tree Microhabitats retention, islands of senescence...)
- Irregular forest management implementation at small scale

.....?

Thank you for your attention!

