



[Integrate Network](#)

[European Forest Institute](#)

## Issue 8 - December 2024

### News from the Chair

Dear Friends of the Integrate Network,

Towards the end of Austria's chairmanship, I would like to address all members, supporters and friends of the network and briefly summarise our year 2024 together.

*Integrative Forest Management* is part of sustainable forest management: In contrast to the segregative approach, the integrative approach pursues the conservation and promotion of biodiversity and other ecosystem services within managed and diversely utilised forests as an alternative to the mere abandonment of use or the establishment of protected areas. A combination of both concepts would be ideal: On the one hand, protected areas where they are truly necessary and beneficial, and on the other, integrative forest management on necessarily managed forest areas. However, we must not ignore the challenges resulting from the climate crisis. Our [webinar](#) in July focused on the forest topic 'Ecosystem Resilience through Biodiversity - Nature's Insurance Policy in a Changing World'. How can integrative protection of biodiversity contribute to making our forests more resilient to unforeseeable developments through climate change?

This year, we put great importance on the perspectives of forest owners. Our [Annual Meeting](#) in Vienna in October was held under the banner 'Integrative Forest Management through the lens of private forest owners: how to bring strategies down to the forest floor'. We deliberately invited managers from different ownership categories and visited them during the excursions. True to the overarching goal that the Integrate Network should mediate between practice, science and policy, we spread the programme widely in this direction.

There were also many activities in our member countries with regional or national meetings. Our contact with the European Commission was deepened through active participation in workshops. Furthermore, the Network set up new Marteloscopes and organised related events in several countries. It is very important to continue along this path and to ensure that in all activities the ideas of the Integrative Approach, both generated and represented by the Integrate Network, are taken up by practitioners and brought to the forest floor. I believe that the new chair country Ireland is on the right track and wish it every success.

Finally, I would like to wish all participants, supporters and friends of the Integrate Network a Merry Christmas and much joy and success in the New Year!

Georg Frank  
Integrate Network Chair 2024



## News from the Secretariat

Under the guidance of our dedicated chair, Georg Frank, 2024 marked another year of connecting policy, science and practice through fruitful discussions, training and network events.

At the beginning of the year, the German Ministry of Food and Agriculture brought together regional forest managers in Fulda for a first-of-its-kind 'National Integrate Workshop'. The Integrate marteloscope network was also represented at one of Germany's biggest forestry fairs named [KWF Sonderschau](#). This year's [10th Annual Integrate Network Meeting](#) offered the possibility for exchange between Integrate members, while immersed in Austria's forests to learn about integrative case studies. During our Voting and Discussion session, current members voted on Hungary to take over the Chairmanship in 2026, as well as confirmed that the Steering Committee in 2025 will be composed by Austria, Ireland, Hungary, Germany and Spain.

We would like to take this opportunity to wish our current chair Georg Frank (BFW, Austria) all the best for his well-deserved retirement and express our sincere gratitude for his dedication and commitment as Chair of the Integrate Network in 2024! We also want to express a very warm welcome to our new Chairs, Dermot Dunphy (Department of Agriculture, Food and the Marine) and Jonathan Spazzi (Teagasc) from Ireland, who will start their term in January 2025. Let's carry our achievements and lessons learned in 2024 into the new year, as we embrace new challenges and opportunities with the same enthusiasm, good spirit and teamwork that defines the Network.



## Past events and activities



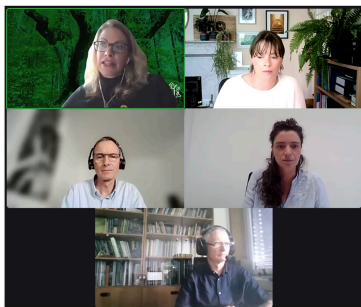
### 1. National Integrate Workshop

This year was the first National Integrate Workshop in Fulda (organized by German Ministry of Food and Agriculture in cooperation with HessenForst and EFI) – a first networking event between federal, state and local stakeholders from forestry practice and decision making in Germany. Around 30 stakeholders discussed how to grow the potential of network to further support current social and political discussions related to best forestry practices and nature conservation solutions.



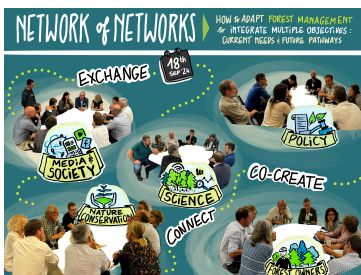
### KWF Sonderschau

KWF Sonderschau 2024, a forestry fair in Germany, brings together each year approximately 50.000 visitors. From 19. – 22. June, the Integrate Secretariat represented the marteloscope network. A site specifically set up for the KWF at the Integrate Network booth allowed to demonstrate the use of martelosopes and the I+ tablet-based training software firsthand to the visitors. Read more [here](#).



## Integrate Webinar: “Forest Ecosystem Resilience through Biodiversity – Nature’s Insurance Policy in a Changing World”

With contributions from keynote speaker Marcus Lindner (EFI resilience expert) and panelists from diverse practice and implementation networks, including Olive Leavy (Ireland), Serena Buscarini (Italy) and Jurij Diaci (Slovenia) the webinar attracted 200 participants to discuss the connection between biodiversity and forest resilience. Read more [here](#).



## TRANSFORMIT "Network of Networks" Event

Connecting 16 institutions from 12 different countries, and coordinated by the European Forest Institute, [TRANSFORMIT](#) serves as catalyst for knowledge exchange, capacity building, and collaboration among forest managers, researchers, policymakers, and local communities. The project held a successful “Network of Networks” Meeting in Bonn on 18 September 2024, back-to-back to EFI’s Annual Conference, and with important contributions from Integrate’s incoming Chair Jonathan Spazzi and other Integrate members. Read more [here](#).



## Scientific Seminar on Integrative Forest Management

Our current chair, Georg Frank, represented the Integrate Network during the “Networks” panel discussion alongside the *Mediterranean Model Forest Network*, *Bioregions Facility* and *ProSilva* networks during EFI’s Annual Conference’s Scientific Seminar on 19. September 2024 in Bonn.

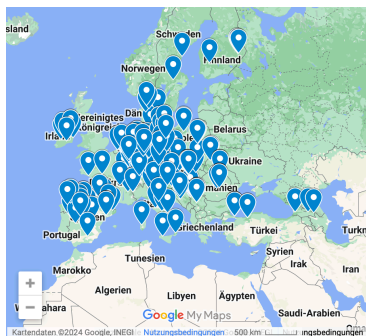


## 10th Annual Integrate Network Meeting

As is tradition by now, around 40 Integrate members and friends of the network gathered at the end of October in Vienna, Austria, for our 10th Annual Integrate Network Meeting – this time, actively bringing attention to private forest owners and case studies for integrative biodiversity enhancement.

As the meeting wrapped up, the symbolic handover of the “key” from Austria to Ireland marked both an end and a new beginning, with the Irish Chairmanship 2025 set to continue exploring integrative and communicative approaches in forest management. Read more [here](#).

# Updates from Practice



## Marteloscope network

Our number of marteloscope sites has continued to increase to 250 sites in 26 countries. Andorra joined as a new country this year, and there are continued requests coming in to the Integrate Secretariat for the establishment of new sites. Some of our practice partners have started to re-measure their sites and send us the new data. Also, our marteloscope related data set is growing and has again found use in scientific papers.

A current update of the [Spatially explicit database of tree related microhabitats](#) hosted at the Global Biodiversity Information Facility (GBIF) is underway and will easily double the current number of 42,078 single tree observations. The map and the list of marteloscope sites including fact sheets can be found [here](#).



## Forest MOOC for Change attracted more than 12,000 learners!

This massive open online course started in October 2023, aiming to facilitate transformation of forests towards integrated management systems, promoting production of quality wood, biodiversity and ecosystem services. One of the founders is our incoming Integrate Chair Jonathan Spazzi, representing TEAGASC, together with European forest agencies in Belgium, France and Germany. The eight-week course was offered in three languages (French, German and English), self-paced and includes 74 tutorial videos, online quizzes and exercises to carry out in the forest. Find out more [here](#).



## Inauguration of a school forest demonstration site in Ljubljana, Slovenia

To make science more tangible and appealing, the EU H2020 project MULTIPLIERS established novel Open Science Communities, expanding opportunities for science learning in collaboration with schools, universities, informal education providers, museums, local associations, industry, civil society, policymakers and media across six European countries. Main outputs related to the Integrate Network were the inauguration of the school forest demonstration site, Smarna gora, in Ljubljana, Slovenia, together with around 30 school children. Read more [here](#).



## MULTIPLIERS learning activities

Supported by the Integrate Secretariat, various outdoor learning events took place with 8th grade school students of the Liebfrauen-Gymnasium in Bonn, Germany, at the Jägerhäuschen marteloscope. Altogether, EFI organized 3 field visits for 60 to 70 school students. The aim was to build their capacity as "multipliers" on forest-related knowledge and management, which they were able to communicate to their families, friends and other interested participants during the "MULTIPLIERS forest festival". The MULTIPLIERS project also prepared [teaching toolkits for marteloscopes](#) and presented them at their [final event](#).



## Practice-level activities

Other interesting activities related to the practice field have taken place throughout the year 2024. Find a selection of them on our [website](#):

- *Using marteloscopes as training tool for conveying forest management practices – case example retention forestry*
- *Can Marteloscopes be sites of encounter between climate activists and forest managers?*
- *Virtual tree marking in Italy*
- *Marteloskop-Übung im Tharandter Wald*
- *Managing forests virtually*
- *“Biodiversity positive by 2030”: Exchanging Ideas on Biodiversity Conservation in Bologna*
- *MOUNTAINSIDE: New “classroom in the forest” was inaugurated in Italy*
- *Forest MOOC for Change: Communicating new integrated forest management systems to over 12.000 learners!*

# Updates from Policy



## FOREST EUROPE Ministerial Conference

The recent 9th FOREST EUROPE Ministerial Conference, held in Bonn on October 1st and 2nd, was a pivotal moment for forest protection in Europe. A key achievement of the conference was the decision to establish the FoRISK facility, which will be hosted at EFI in Bonn starting in 2025. FoRISK will serve as an independent secretariat, providing strategic advice and facilitating collaborative efforts to address the growing risks facing European forests due to climate change. Read more [here](#).

# Updates from Research

Boonen, S., O'Brien, L., Schifferdecker, G., Schuck, A., 2024. Adaptation des forêts Européennes: perspectives des gestionnaires face aux défis du changement climatique. *Silva Belgica* 2/2024. 48-52.

Schuck, A., Kraus D., Krumm, F., Varis, S., Zudin, S., Suominen, T., 2024. The Integrate+ software for virtual training exercises in forest stands. *Integrate Network Paper*. 30 p. <https://doi.org/10.5281/zenodo.10570207>

Larrieu, L., Bouget, C., Courbaud, B., Doerfler, I., Goux, N., Goulard, M., Ladet, S., Laroche, F., Acloque, A., Bütler, R., Kozak, D., Kraus, D., Krumm, F., Lachat, T., Martin, M., Müller, J., Paillet, Y., Schuck, A., Stillhard, J., Svoboda, M., Trinidad Torres García, M., Vandekerckhove, K., Zudin, S., (2025). Spatial distribution of Tree-related microhabitats in European beech-dominated forests". *Biological Conservation* 301. 110867. <https://doi.org/10.1016/j.biocon.2024.110867>

John, M., Wirth, K., Kaufmann, A., Ertelt, H., Frei, T. 2024. Forest deliberations: Marteloscopes as sites of encounter between climate activists and forest managers, *Forest Policy and Economics*, 169, 103356, <https://doi.org/10.1016/j.forpol.2024.103356>

Kadavý J, Kneiflová J, Kneifl M, Uherková B., 2024. Using marteloscope in selection forestry – Study case from 'Pokojná hora' (Czech Republic). *J. For. Sci.* 2024;70(9):447-457. doi: 10.17221/29/2024.

# Outlook and upcoming events 2025



## Forestry Workshop in Zurich, Switzerland (2. – 4. June 2025)

SAVE THE DATE for an upcoming Integrate Network workshop in Zurich on the topic of *“Increasing biodiversity to promote adaptation and resilience of European forests by using close to nature forestry”*

## Upcoming Integrate webinars

One-two webinars will be organized in 2025 – stay tuned for updates! They will be announced on the [Integrate website](#).

*For any information on events and communications activities please contact [rahel.konen \(at\) efi.int](mailto:rahel.konen@efi.int)*

European Forest Institute  
Platz der Vereinten Nationen 7  
53113 Bonn



This email was sent to {{ contact.EMAIL }} You received this email because you are registered with European Forest Institute

[Unsubscribe here](#)



© 2022 European Forest Institute